

**MMU**



**MORRISTOWN AIRPORT**

---

# Phase XI

**Runway 5-23 Rehabilitation Project**

# Runway 5-23 Rehabilitation Project: Phase XI

## Proposed Phase Dates:

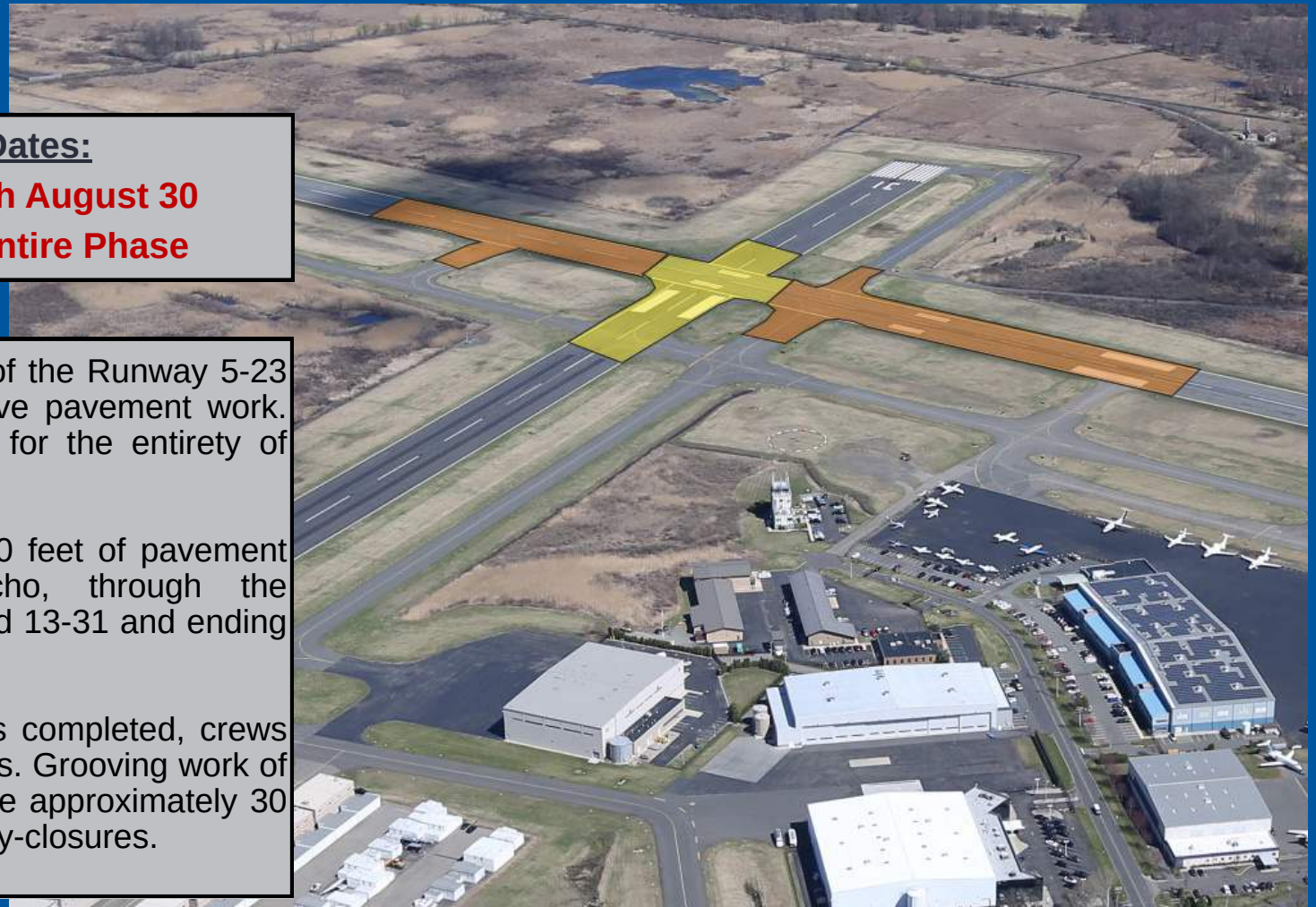
**2200L on July 27 through August 30**

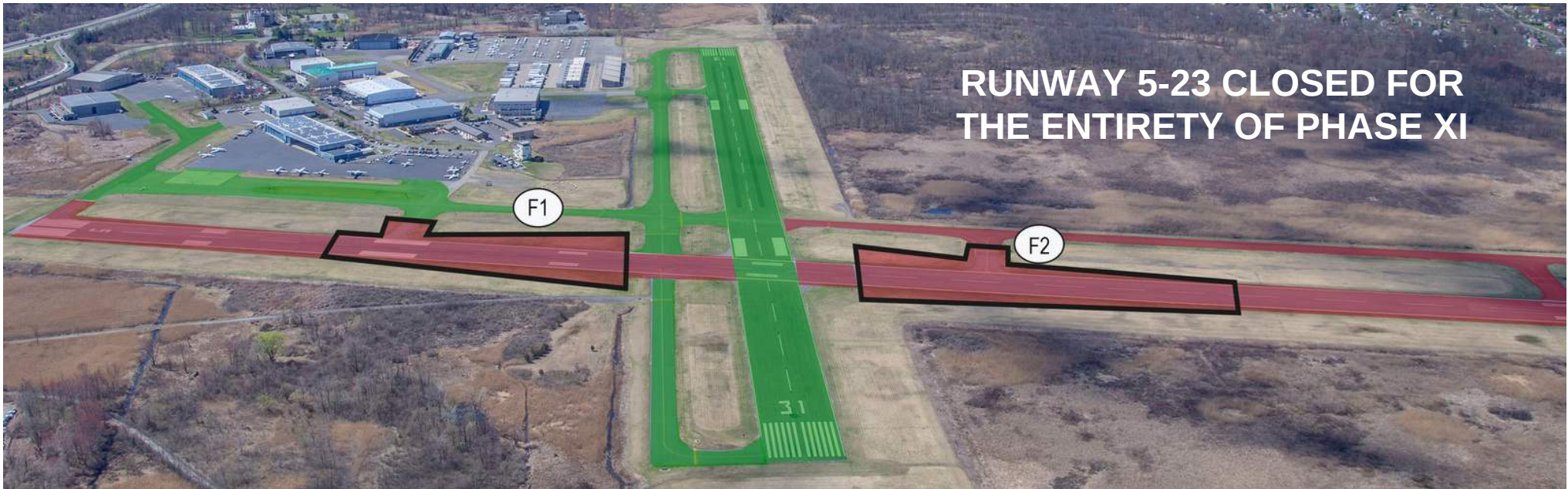
**RWY 5-23 CLOSED for entire Phase**

The primary focus of Phase XI of the Runway 5-23 Rehabilitation project is corrective pavement work. Runway 5-23 will be CLOSED for the entirety of Phase XI

Crews will mill out roughly 2,500 feet of pavement from South of Taxiway Echo, through the intersections of Runway 5-23 and 13-31 and ending just shy of Taxiway Golf.

After base course repair work is completed, crews will repave the milled-out sections. Grooving work of the new pavement will take place approximately 30 days after pavement under nightly-closures.





### Phase XI – 1: 2200L July 27 – August 25

- RWY 5-23 **CLOSED**
- RWY 13-31 **OPEN**

#### Other Airfield Impacts:

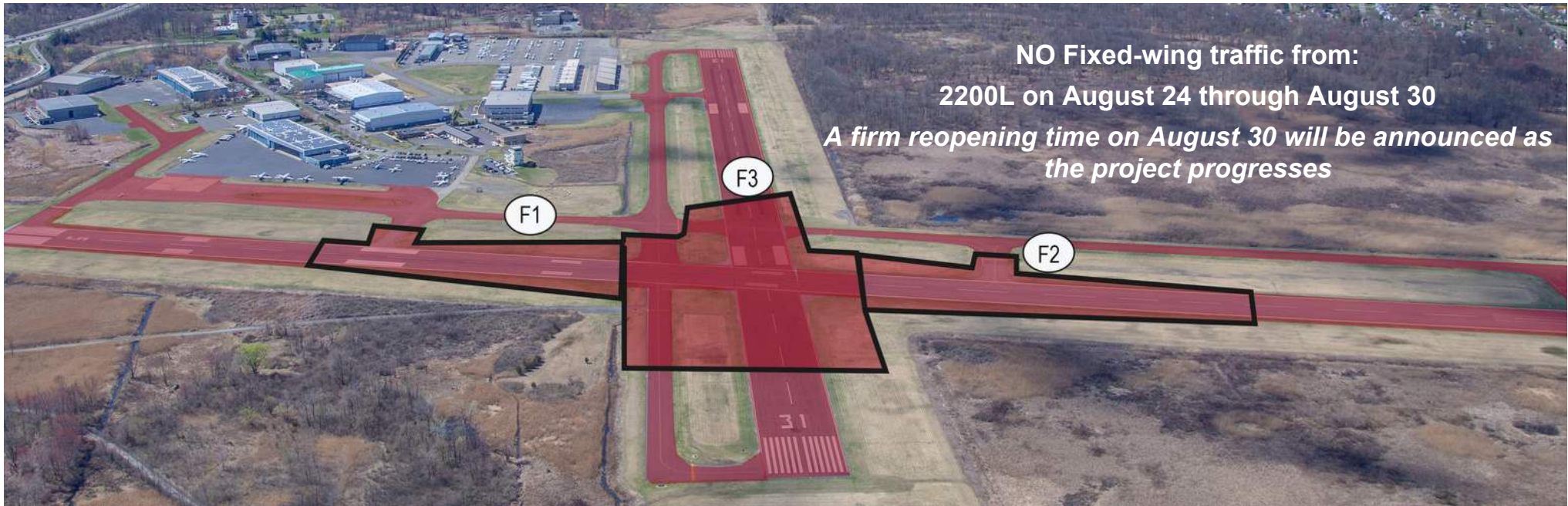
- Pavement in **green** OPEN
- Pavement in **red** CLOSED

#### Work Overview:

Crews will work concurrently in the identified F1 and F2 areas above first.

Crews will begin milling out pavement from the intersection of RWY 5-23 and 13-31 and work outwards towards the RWY 5 and RWY 23 ends. Once milling is complete, base course repair work will take place





## Phase XI – 2: 2200L on August 24 – 30

- RWY 5-23 **CLOSED**
- RWY 13-31 **CLOSED**

### Other Airfield Impacts:

- Airport ***CLOSED*** to fixed-wing traffic during Phase XI - 2

### Work Overview:

Once milling and base course repair work is completed in F1 and F2, crews will conduct the same milling and base course repair work in the F3 area.

Once all milling and base course repair work is complete, crews will pave the entirety of F1, F2 and F3 areas, starting from the F2 area and work straight through the F1 area towards the RWY 5 end.

# Summary

---

Runway 5-23 CLOSED for  
entirety of Phase XI  
construction: 220L on July 27  
through August 30

Runway 13-31 Opened:  
July 27 – August 25

Airport CLOSED to FIXED-  
WING TRAFFIC:  
2200L on August 24 through  
August 30

Nightly Closures for  
grooving work: TBD

# Runway 5-23 Rehabilitation Project: - Phase XI Alerts

Please see below for the different modes of communication. DM AIRPORTS, LTD. encourages all airport users to check NOTAMs as the **first source of information** for current airfield status during runway work.

## NOTAMs:

- *DM AIRPORTS, LTD. encourages airport users to check NOTAMs regularly for the most accurate and up to date airfield status.*

[NOTAMS.faa.gov](https://NOTAMS.faa.gov)

## Airport Email Alerts:

- *Sign up for Constant Contact email alerts. DM AIRPORTS, LTD. sends regular alerts during construction phases.*

[MMUair.com](https://MMUair.com)

## MMU on X (Twitter):

- *Social media used to echo email alerts and direct airport users to the website, MMUair.com*

[@MMUairport](https://twitter.com/MMUairport)