

An aerial photograph of an airport, showing runways, taxiways, and various airport buildings. The image is slightly faded to serve as a background for the text.

# RWY 5-23 Rehabilitation Project

## **Phase II, Stage C** *Overview, Timing & Operational Impacts*



# Phase II, Stage C Aerial & Work Areas Overview





An aerial photograph of an airport terminal and surrounding infrastructure, including runways, taxiways, parking lots, and various airport buildings. The image is slightly faded to make the text overlay stand out. The text is centered in the middle of the image.

*The following scheduled closures are subject to change due to weather and other impacts. Please check NOTAMS regularly before flying.*

# OCTOBER 2022

SUN	MON	TUE	WED	THU	FRI	SAT
						1
2	3	4	5	6	7	8
9	10	11	12	13	14	15
16	17	18	19	20	21	22
23	24	25	26	27	28	29
30	31					

**Red Rectangle:**

Full closure of Runway 5-23

**Yellow X:**

Nightly Closure of Runway 5-23

- 2220L – 0600L

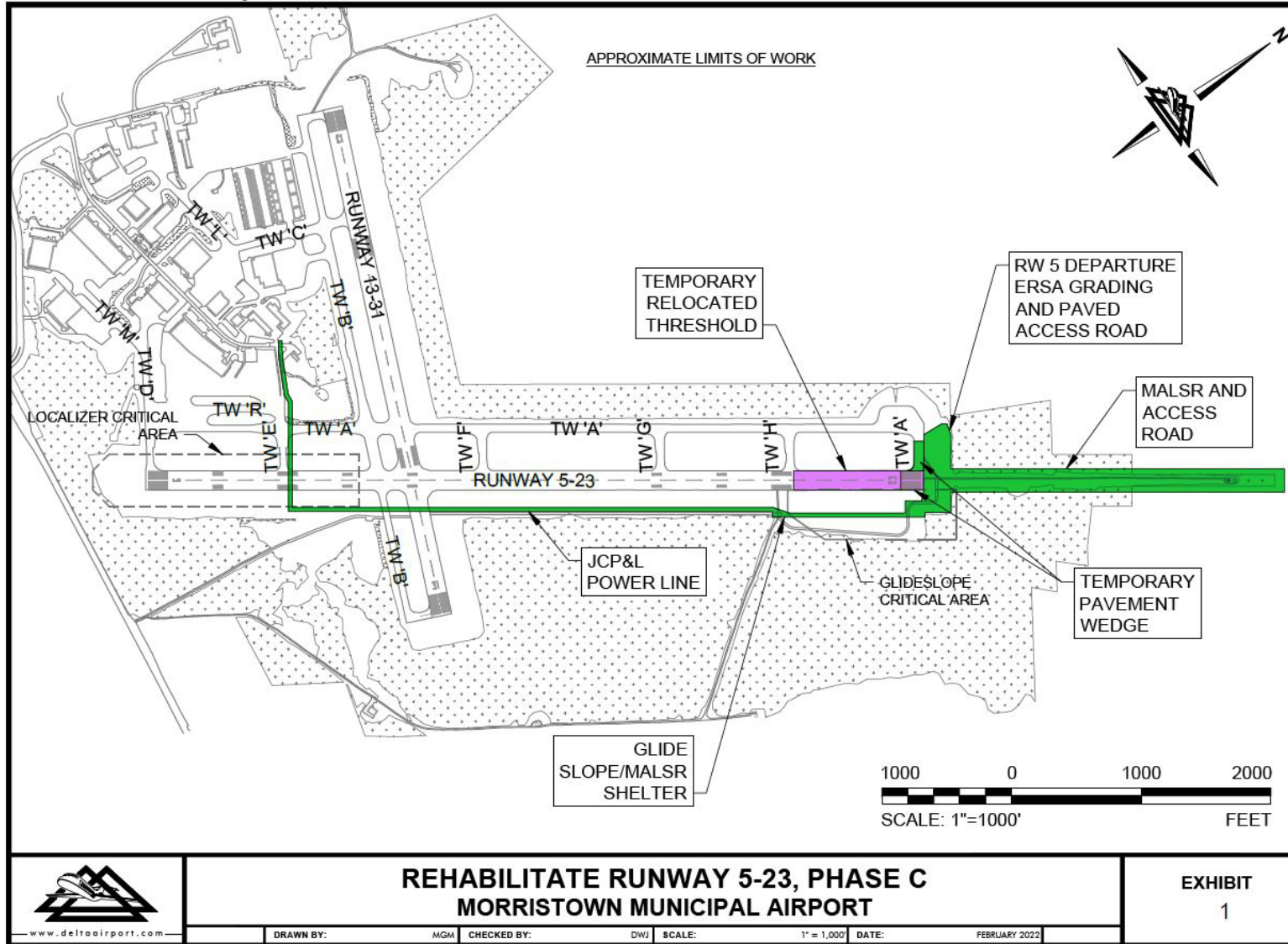
**Blue Rectangle:**

Daily closure of Runway 13-31

- 0700 – 1700

*All closures of Runway 5-23 and Runway 13-31 subject to change due to weather or construction impacts*





## Phase II, Stage C Overview

### Overall Project Timeline

**July 8, 2022 – November 13, 2022**

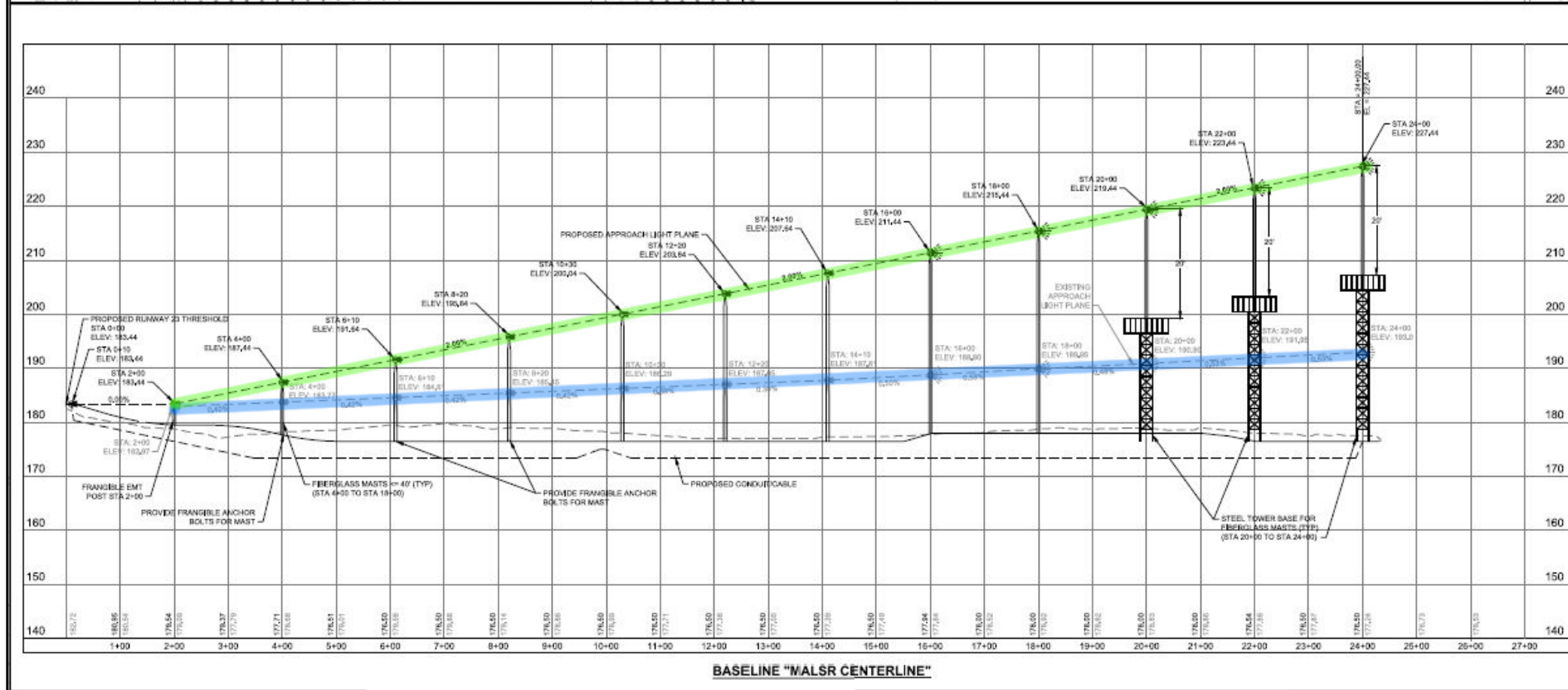
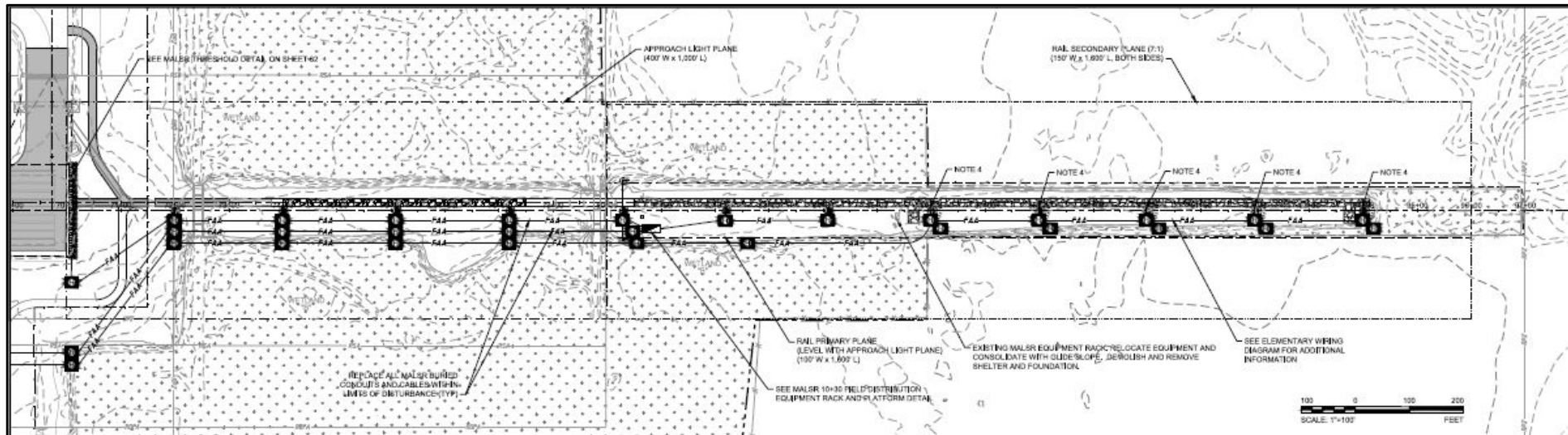
Work to take place in Phase II, Stage C of our Runway 5-23 Rehabilitation Project includes:

- Installation of a new Medium Intensity Approach Lighting System (MALSR)
- Installation of a new Glide Slope/MALSR Shelter
- Grade portions of RWY 23 Safety Area adjacent to Glide Slope.
- Installation of a new JCP&L power feed from FAA Tower area to the Glide Slope/MALSR Shelter
- Installation of a paved and gravel access road off the end of RWY 23
- Installation of a temporary pavement wedge on Taxiway Alpha at the end of RWY 23



*Contractors remobilize to site; TBD*

# New MALSR System



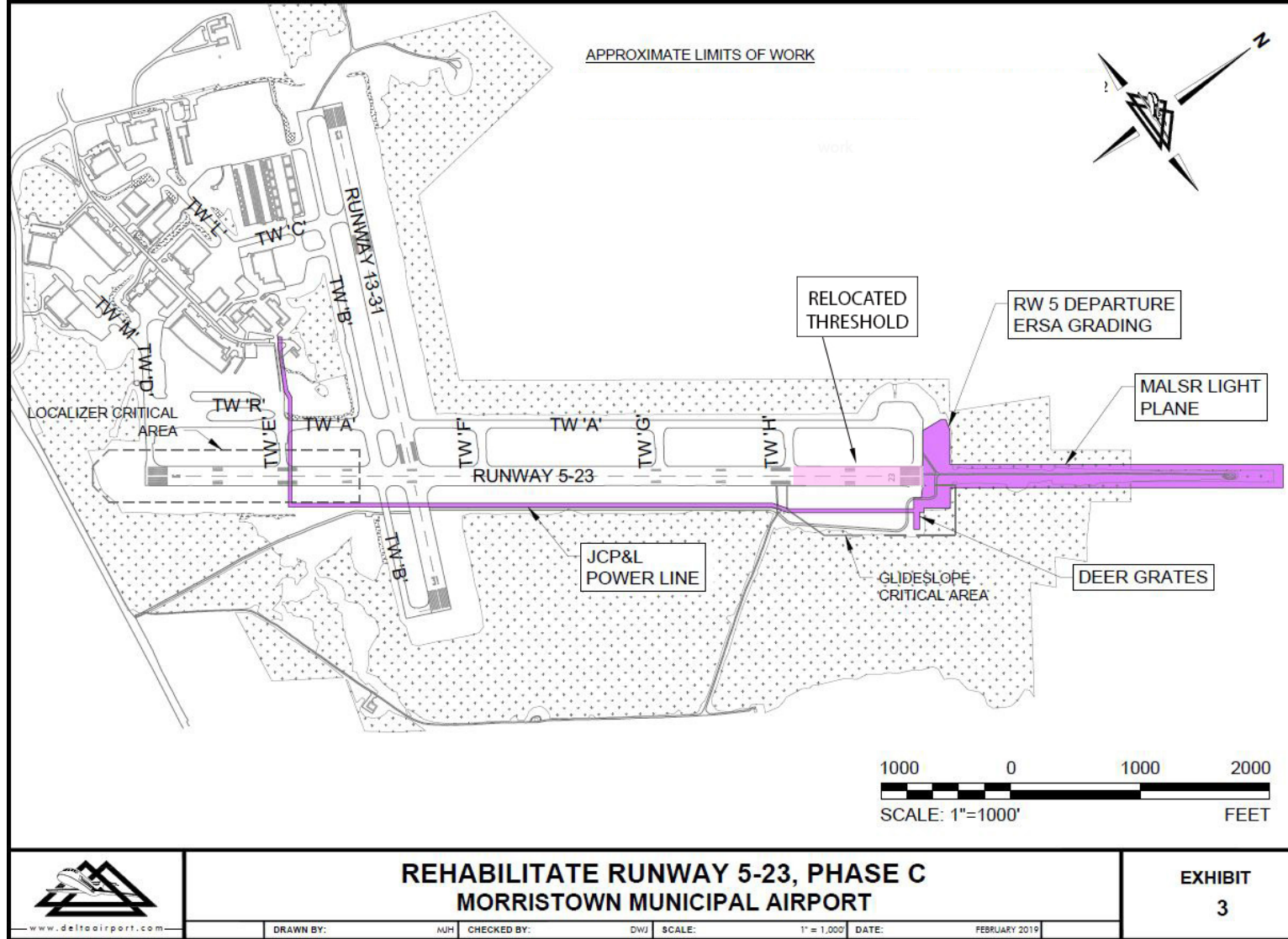
Green Line:

- New MALSR

Blue Line:

- Current MALSR





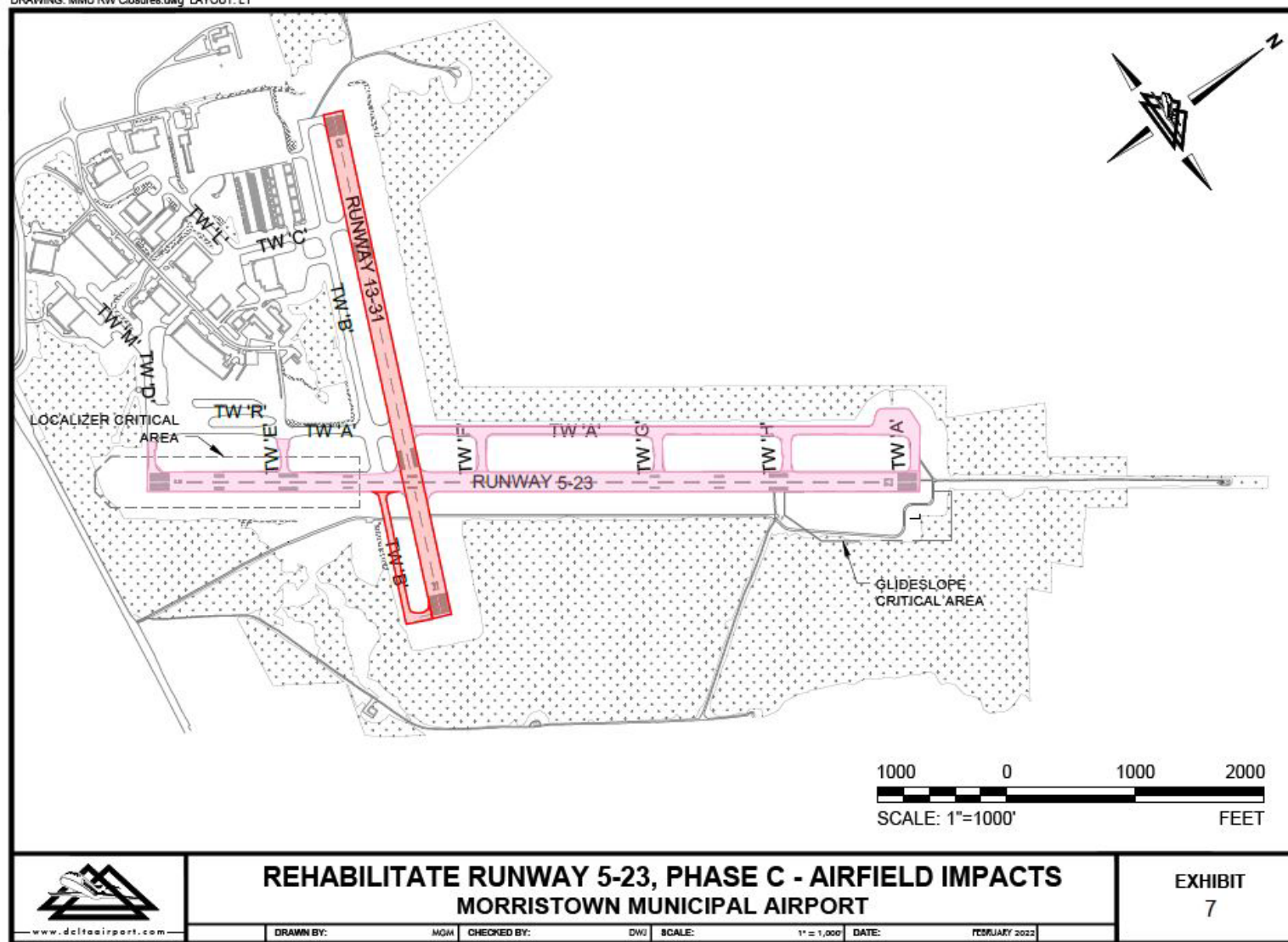
## Phase II, Stage C Operational & Navaid Impacts Overview

### Operational Impacts

- Relocation of RWY 23 Threshold
- **FULL Closure of RWY 5-23 from 2200L on 7/8 through 0600 on 7/11**
  - **RWY 5-23 shortened to 4,998'**
- Restore Relocated Threshold
- **FULL Closure of RWY 5-23 from 0600L on 10/8 through 0600 on 10/10**
  - **RWY 5-23 restored to 5,998'**
- *Nightly Closures of RWY 5-23*
- *Daily Closures of RWY 13-31*
- *Nightly Closures of RWY 13-31*

### NAVAID Impacts

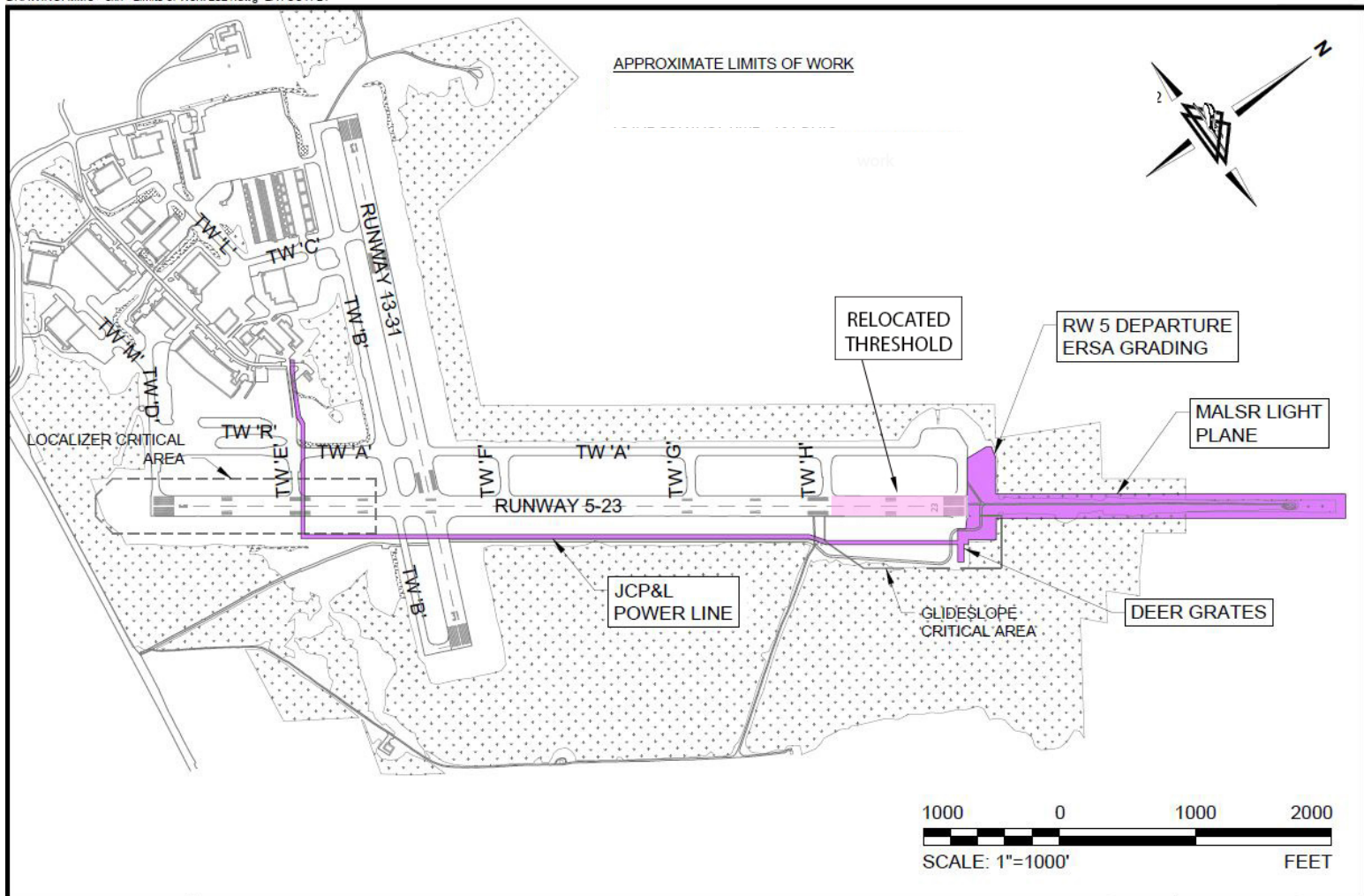
- RWY 23 Glideslope and MALS Out of Service from 7/8 through TBD



## Phase II, Stage C Airfield Impacts during RWY Closures

- **During RWY 5-23 Closures:**
  - Taxiway Delta: Closed from Taxiway Alpha to RWY 5
  - Taxiway Alpha: Closed from RWY 13-31 to RWY 23
  - Taxiways Echo, Golf, Foxtrot & Hotel: Closed from Taxiway Alpha to RWY 5-23
- *Impacts depicted in **Pink***
- **During RWY 13-31 Closures:**
  - Taxiway Bravo: Closed from RWY 5-23 to RWY 31
- *Impacts depicted in **Red***





## REHABILITATE RUNWAY 5-23, PHASE C MORRISTOWN MUNICIPAL AIRPORT

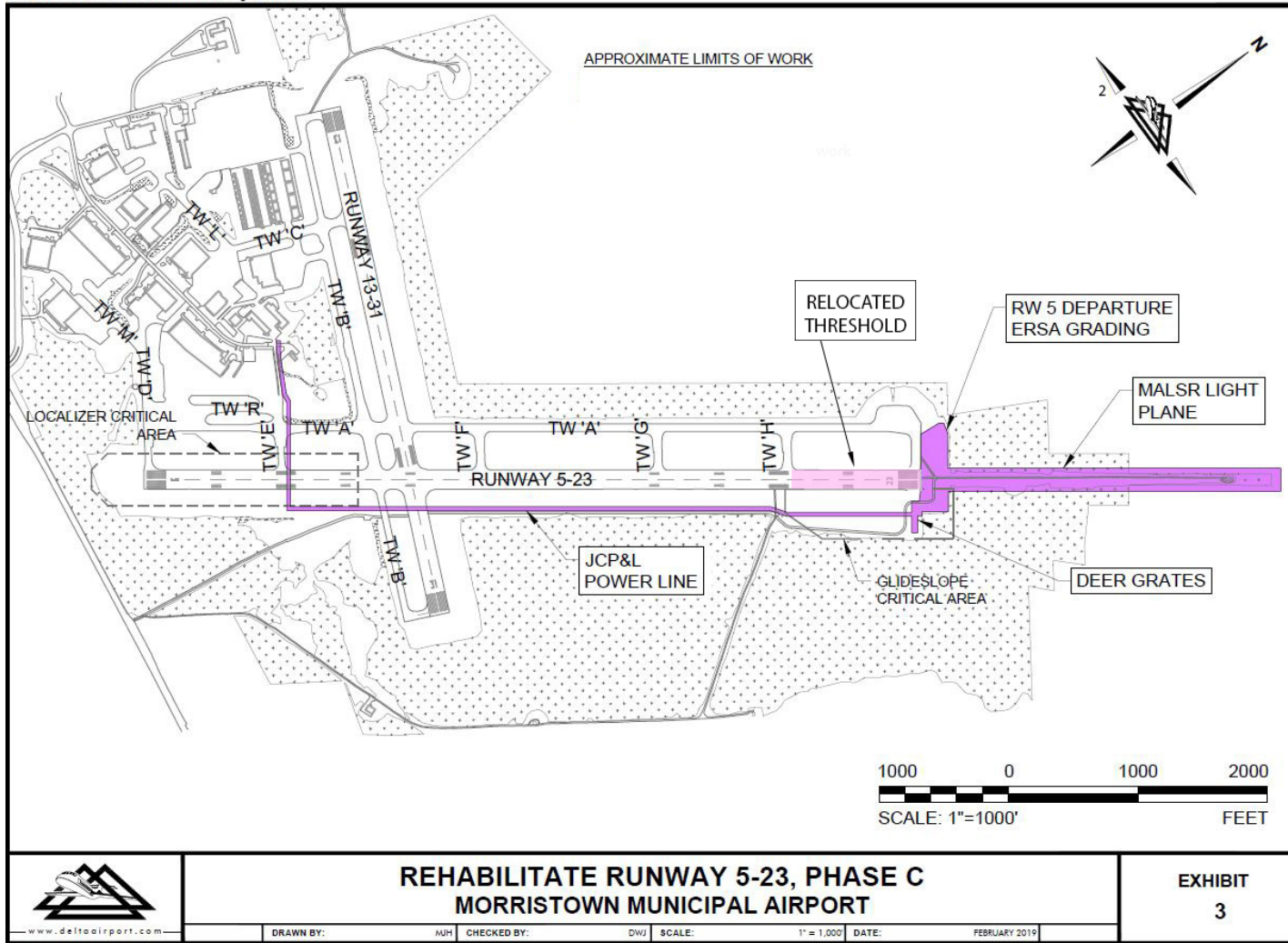
EXHIBIT  
3

DRAWN BY: MJH CHECKED BY: DWJ SCALE: 1" = 1,000' DATE: FEBRUARY 2019

## Phase II, Stage C

### Phase II, Stage C Major Impacts

- Temporary relocated threshold installed:
  - 7/8 through 7/11
- Relocated threshold restored:
  - 10/8 through 10/10
- Entire project timeline:
  - 7/8 through 11/13



## RWY 5-23 Navigational Aid Impacts During Phase II, Stage C

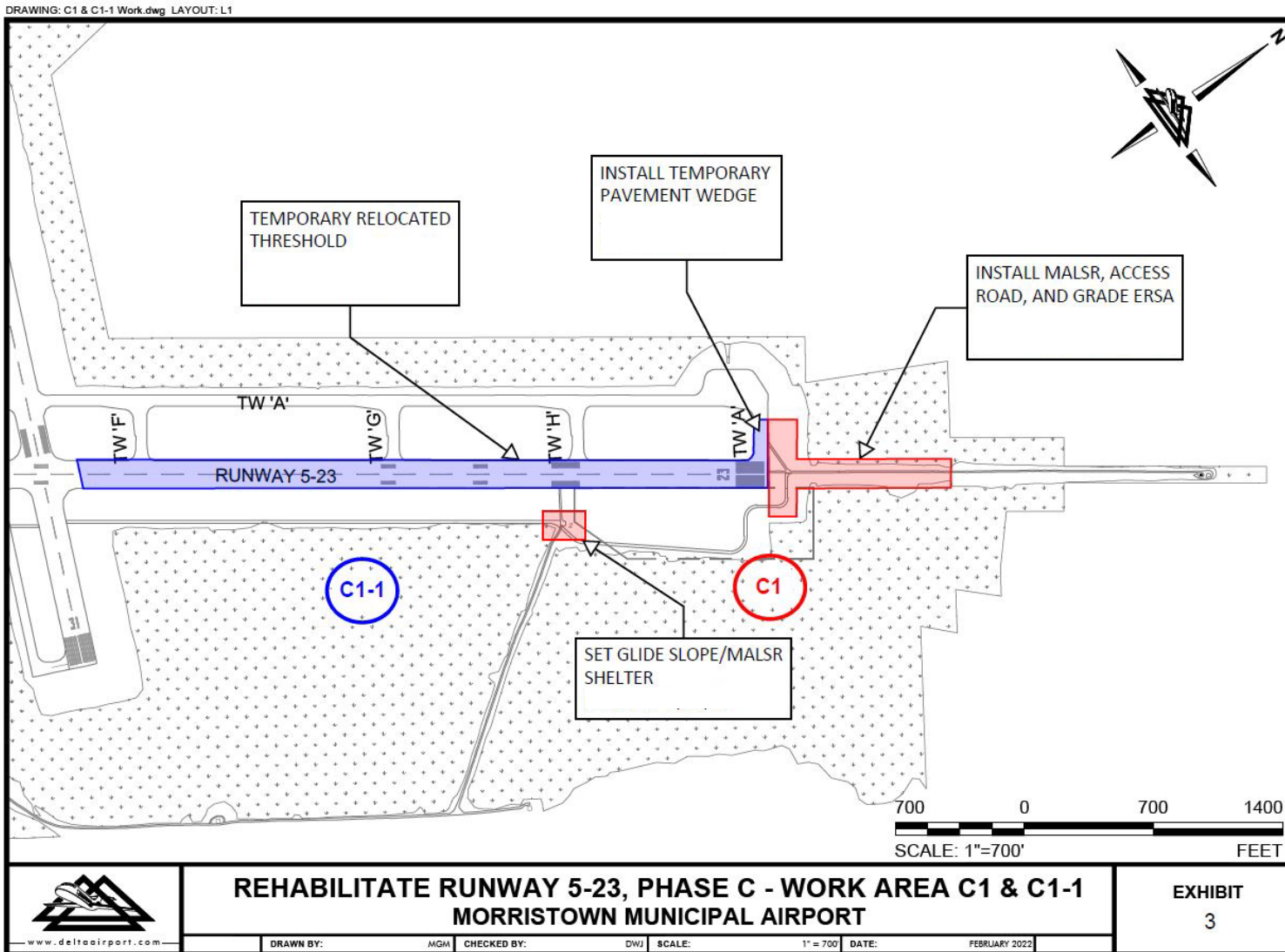
- **July 8 – TBD**
- \*RWY 23 Glide Slope and MALSR is to be out of service during this time frame
- *\*Old MALSR system being dismantled to make way for new system installation. Grading on the MALSR rd.*

## Available Approaches During Phase II, Stage C

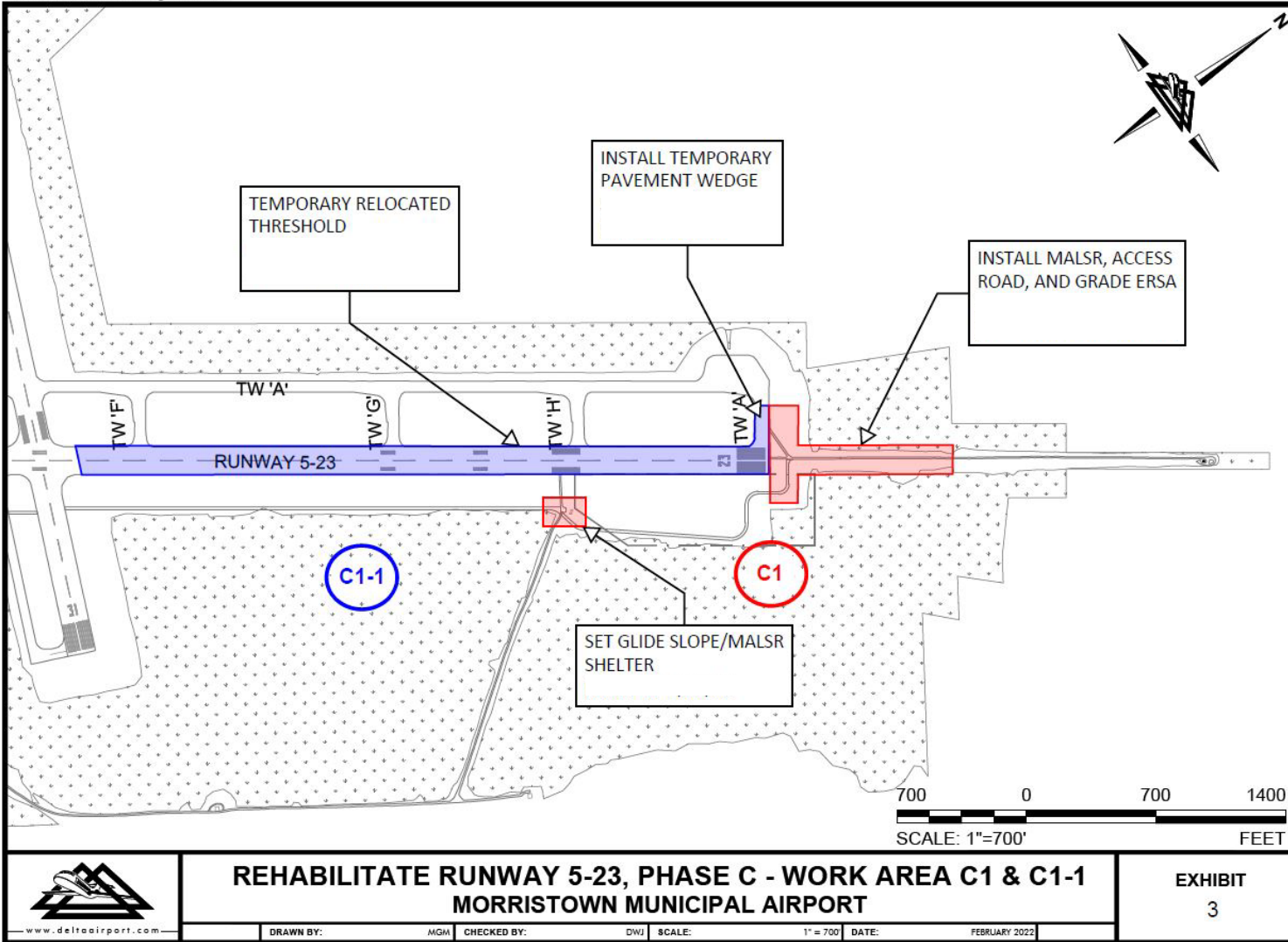
- ✈ RNAV (RNP) Y RWY 23
- ✈ RNAV (GPS) RWY 05
- ✈ RNAV (GPS) Z RWY 23



## Phase II, Stage C1



- **July 8 – August 22**
- Install markings for RWY 23 Temporary Relocated Threshold (4,998 ft of runway available)
  - **July 8 – 11**
    - Install temporary pavement wedge on TW A and the end of RW 23
    - Demo existing MALSR
    - Grade Extended Runway Safety Area (ERSA)
    - Install new MALSR
    - Install new Glide Slope/MALSR Shelter
    - Install access road to MALSR
- Restore original RWY 23 Threshold markings (Full 5,998 ft of runway available)
  - **October 8 – October 10**



## Phase II, Stage C1 Operational & Navaid Impacts

- FULL closure of RWY 5-23 to install relocated threshold
  - July 8 – 11
- FULL closure of RWY 5-23 to remove relocated threshold
  - October 8 – October 10
- Nightly Closures of RWY 5-23
- Nightly Closures of RWY 13-31
- Daily Closures of RWY 13-31
- RWY 23 Glide Slope and MALSR out of service



**TAXIWAY HOTEL**

**RW 23 RUNUP AREA**

**TAXIWAY ALPHA**

**TW "A"**

**TW "G"**

**TW "H"**

**TW "A"**

**RUNWAY 5-23 BASELINE "RW 5-23"**

TEMPORARY TOUCHDOWN ZONE MARKING (AVIATION WHITE). SEE "TOUCHDOWN ZONE MARKING 150' WIDE RUNWAY" DETAIL "B".

TEMPORARY AIMING POINT MARKING (AVIATION WHITE). SEE "AIMING POINT MARKING 150' WIDE RUNWAY" DETAIL.

TEMPORARY RUNWAY NUMERAL (AVIATION WHITE). SEE "RUNWAY DESIGNATION MARKING" DETAIL.

YELLOW/WHITE RUNWAY EDGE LENSES TO BE INSTALLED ON THE LAST 2000 FEET OF RUNWAY LENGTH.

TEMPORARY TOUCHDOWN ZONE MARKING (AVIATION WHITE). SEE "TOUCHDOWN ZONE MARKING 150' WIDE RUNWAY" DETAIL "A".

MODIFY EXISTING SIGN BECOMES

TEMPORARY 15' WIDE THRESHOLD BAR

TEMPORARY THRESHOLD MARKING (AVIATION WHITE). SEE "150' WIDE THRESHOLD MARKING" DETAIL.

TEMPORARY STAKE MOUNTED THRESHOLD LIGHTS (TYP.). SEE "TEMPORARY STAKE MOUNTED THRESHOLD LIGHT DETAIL".

DEACTIVATE AND COVER EXISTING SIGN.

TEMPORARY ABOVE-GROUND CABLE (NO. 8 AWG L-824C, TYPE C) FOR RUNWAY CIRCUIT IN 1-INCH GRS CONDUIT SECURED TO PAVEMENT (NO PAY ITEM).

STA 39+98.00

5' MAX

CHEVRON SEE CHEVRON DETAIL

1000' TEMPORARY RELOCATED THRESHOLD

DISCONNECT LIGHTS AND PROVIDE TEMPORARY JUMPER CABLE.

DEACTIVATE AND COVER EXISTING RUNWAY EDGE LIGHT (TYP.).

DEACTIVATE AND COVER EXISTING THRESHOLD LIGHT (TYP.).

DEACTIVATE AND COVER EXISTING RUNWAY EDGE LIGHT (TYP.).

DEACTIVATE AND COVER EXISTING SIGN.

LOW PROFILE BARRICADES ACROSS TW "A".

DISCONNECT LIGHTS AND PROVIDE TEMPORARY JUMPER CABLE.

DEACTIVATE AND COVER EXISTING SIGN AND GUARD LIGHTS.

TEMPORARY ABOVE-GROUND CABLE (NO. 8 AWG L-824C, TYPE C) FOR TAXIWAY CIRCUIT IN 1-INCH GRS CONDUIT SECURED TO PAVEMENT (NO PAY ITEM).

DEACTIVATE AND COVER EXISTING SIGN.

**TEMPORARY RELOCATED THRESHOLD MARKING PLAN**

**RW 23 TEMPORARY RELOCATED THRESHOLD 4,998 FEET OF RUNWAY AVAILABLE**

**REMINDER: NO aircraft allowed beyond the temporary relocated threshold**

**REMINDER: NO aircraft allowed  
beyond the temporary relocated  
threshold**

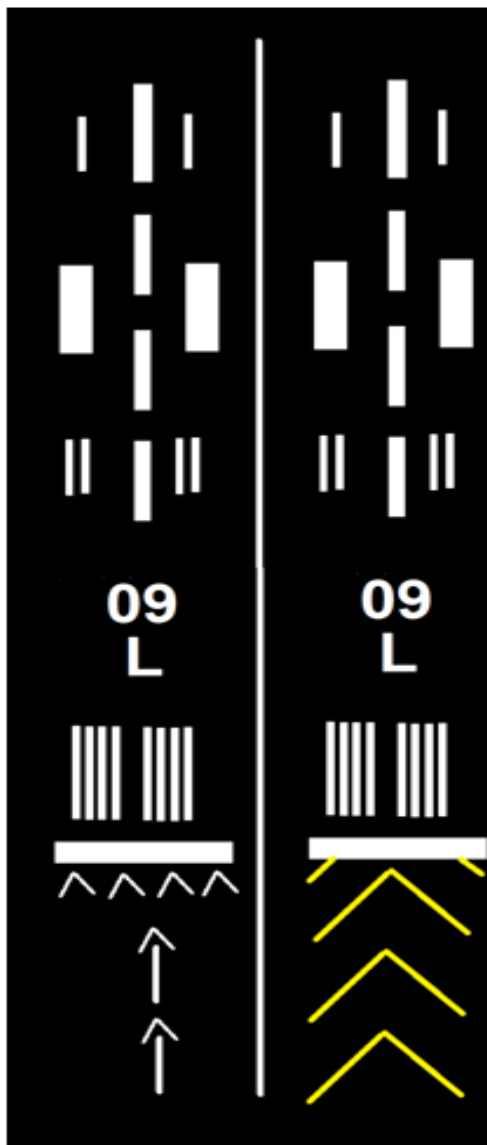
# Relocated Threshold vs. Displaced Threshold

## Relocation of a Threshold

When construction, maintenance, or other activities require the threshold to be relocated towards the rollout end of the runway. When a threshold is relocated, it **closes** a set portion of the approach end of a runway and shortens the length of the opposite direction runway.

## Displaced Threshold

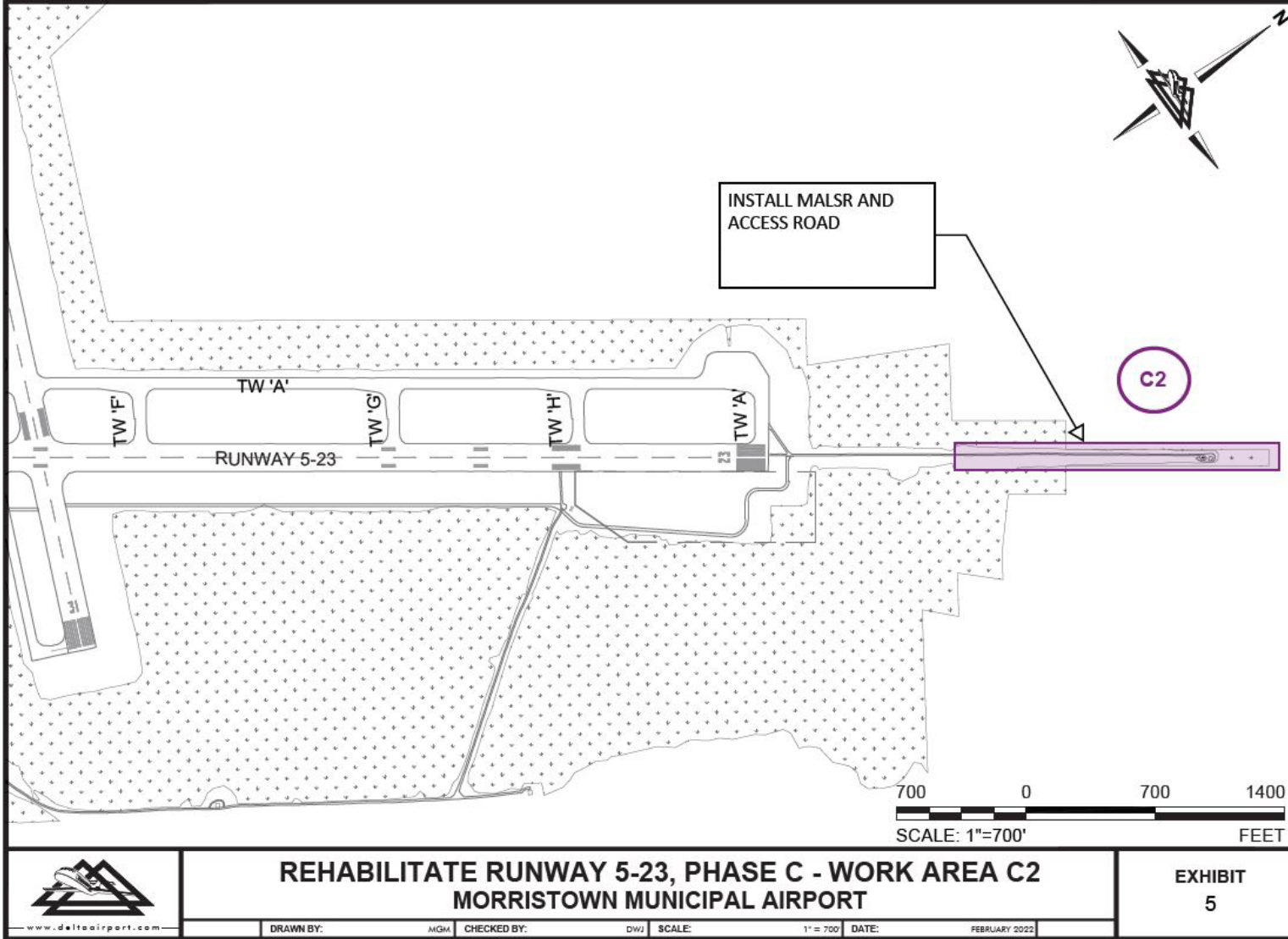
A displaced threshold is a threshold located at a point on the runway other than the designated beginning of the runway. Displacement of a threshold reduces the length of runway available for landings. The portion of runway behind a displaced threshold **is available** for takeoffs in either direction and landings from the opposite direction.



**Displaced  
Threshold**  
Available  
for takeoff  
or roll out.

**Relocated  
Threshold**  
Closed to  
all use.





## Phase II, Stage C2

### ✈ July 11 – TBD

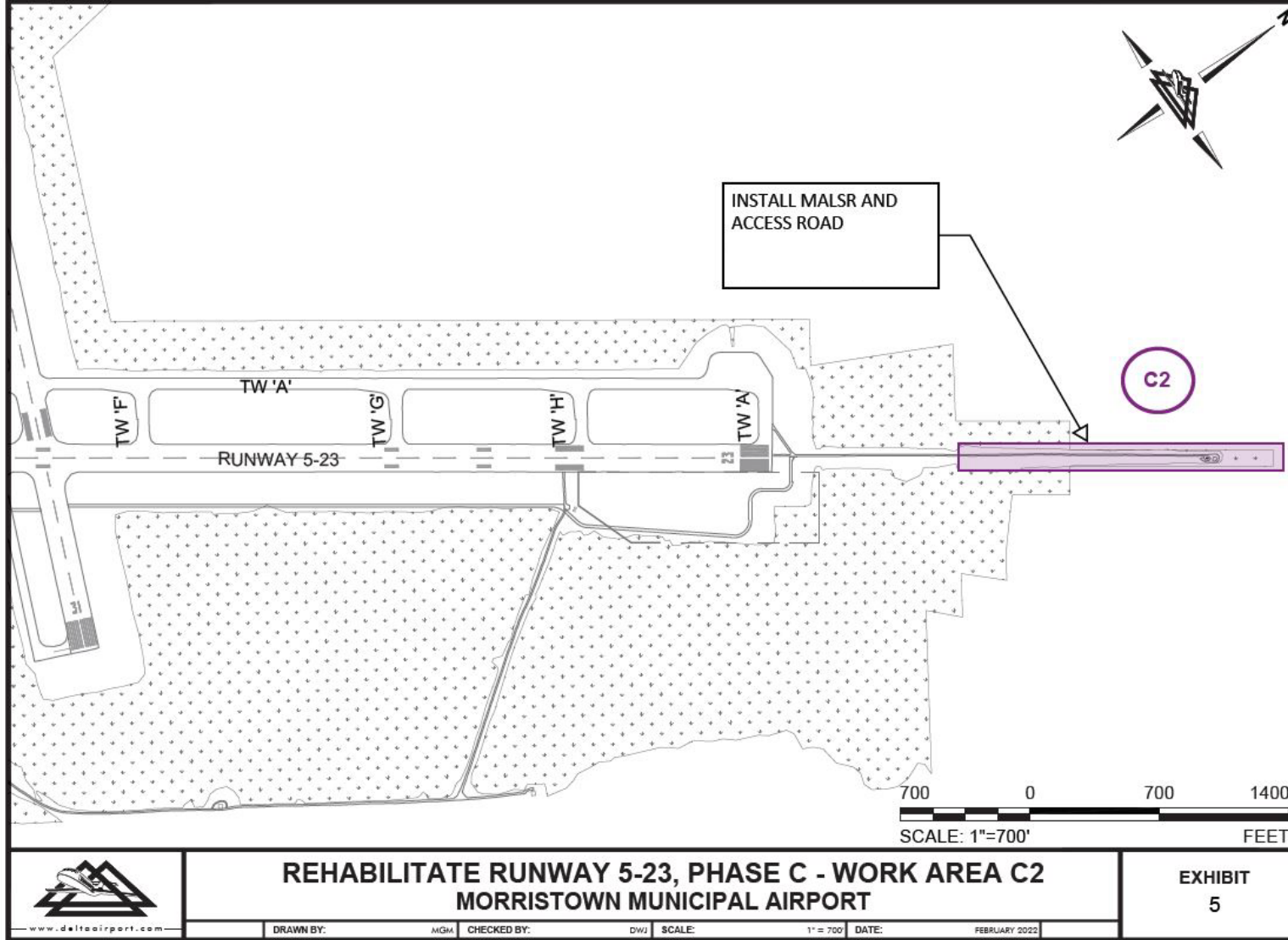
- ✈ Demo existing MALSR
- ✈ Grade project area
- ✈ Install new MALSR
- ✈ Install access road

- ✈ *MALSR work closer to the Runway 23 end to be completed while relocated threshold is in place.*

### ✈ July 8 – October 10

- ✈ *Remainder of the MALSR installation will occur once Runway 23 threshold is restored*

### ✈ September 12 – TBD

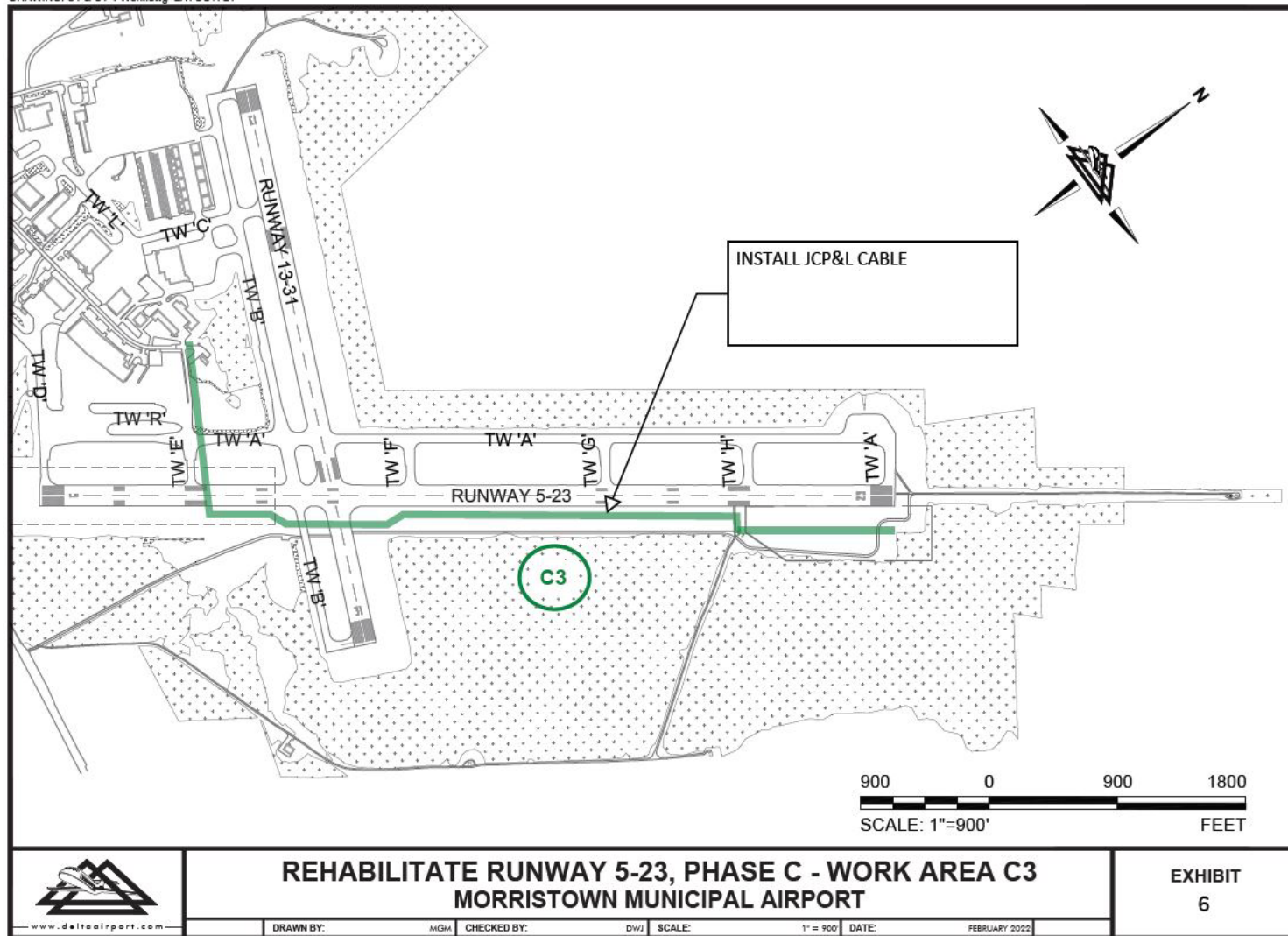


## Phase II, Stage C2 Operational & Navaid Impacts

### ✈ July 11 – TBD

- ✈ Nightly Closures of RWY 5-23
- ✈ Daily Closures of RWY 13-31
- ✈ RWY 23 Glide Slope and MALSR out of service

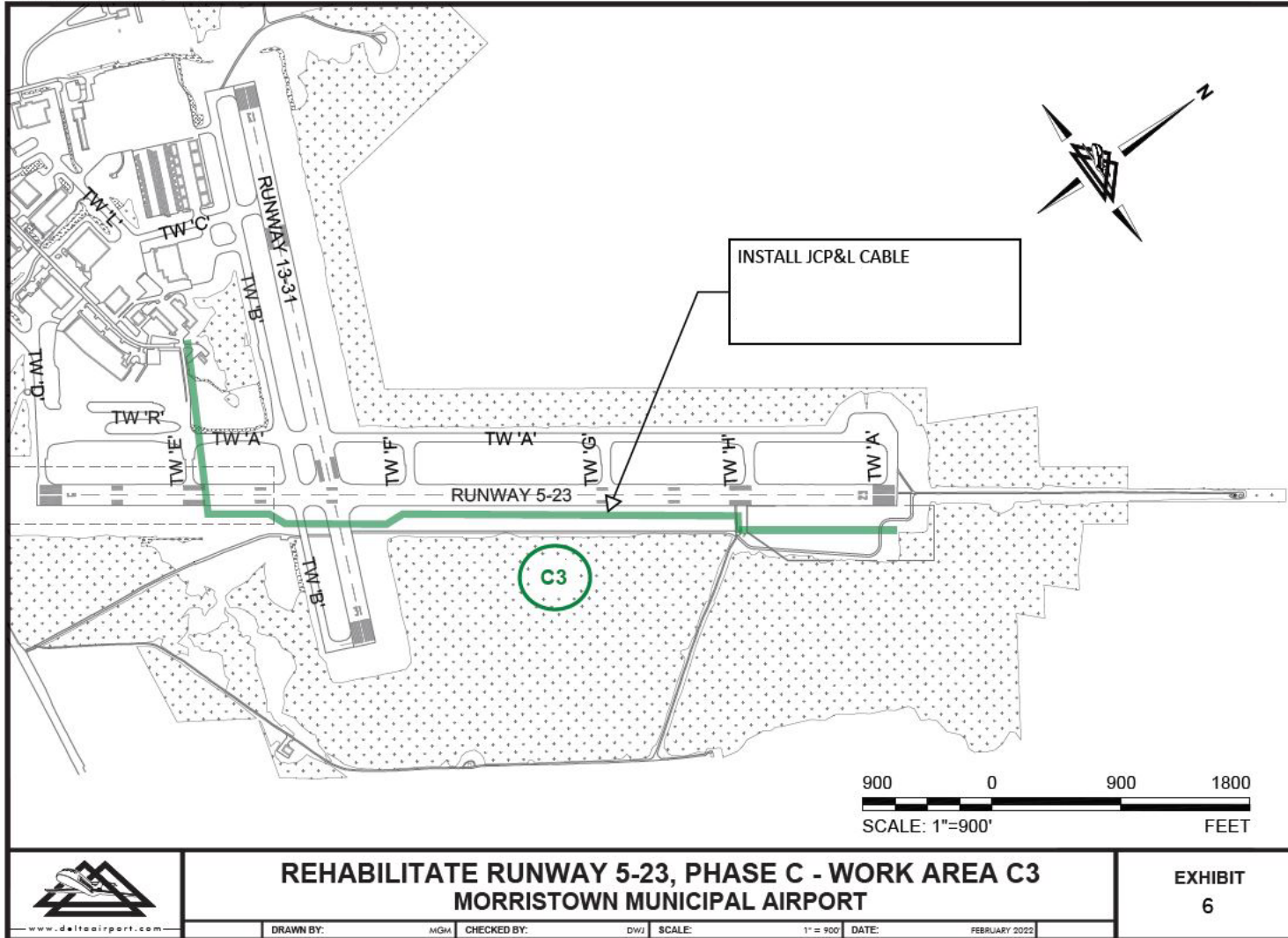




## Phase II, Stage C3

### ✈ July 11 – September 12

- ✈ Work Area C3 will be completed concurrently with Work Area C2
- ✈ Install JCP&L power feed from the FAA Tower to the Glide Slope/MALSR Shelter
- ✈ Install conduit and cable to MALSR



## Phase II, Stage C3 Operational and Navaid Impacts

### ✈ July 11 – September 12

- ✈ Nightly Closures of RWY 5-23
- ✈ Daily Closures of RWY 13-31
- ✈ RWY 23 Glide Slope and MALSR out of service



# Fall Construction Work

- Runway 13-31 Keel Rehabilitation tentatively scheduled for October 2022. More information to come as we get closer.

# RWY 5-23 Rehabilitation Project

## *Phase II, Stage C*

# DM AIRPORTS, LTD. Contacts

Phase II, Stage C Operational  
and Airfield Related questions:

**Darren Large**

Director, Facilities & Operations

[darrenl@mmuair.com](mailto:darrenl@mmuair.com)

973-538-6400

**John Palishen**

Airfield Supervisor

[johnp@mmuair.com](mailto:johnp@mmuair.com)

973-538-6400

Phase II, Stage C Scheduling and  
Project Overview Questions

**Corey Hanlon**

Manager, Communications & Gov't Relations

[coreyh@mmuair.com](mailto:coreyh@mmuair.com)

973-538-6400