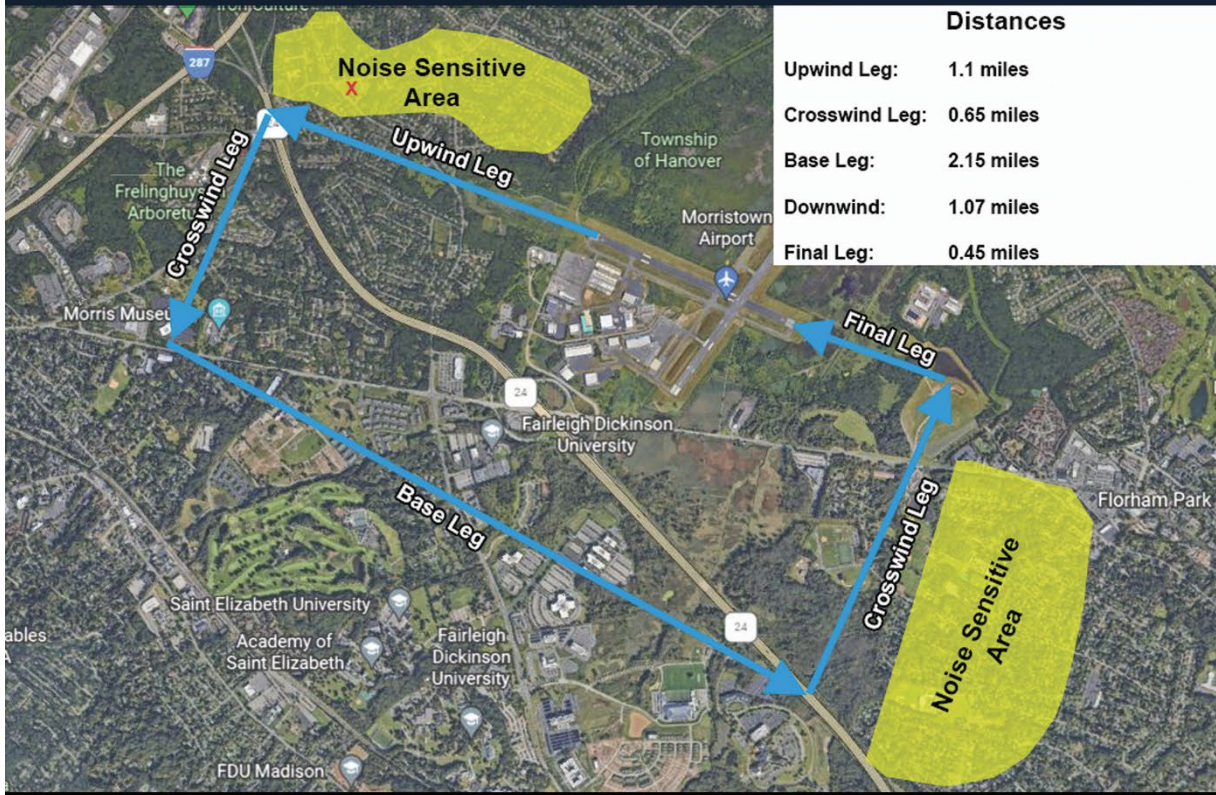


Using Runway 31 for Pattern Work?

Please follow our voluntary noise abatement procedures!

WHEN ABLE, OFFSET 10° TO THE SOUTH AFTER DEPARTURE ON 31



By offsetting departures on 31 by 10° to the South, we significantly reduce the noise impacts on our neighbors.

When able, please follow this noise abatement procedure and thank you for flying quietly!

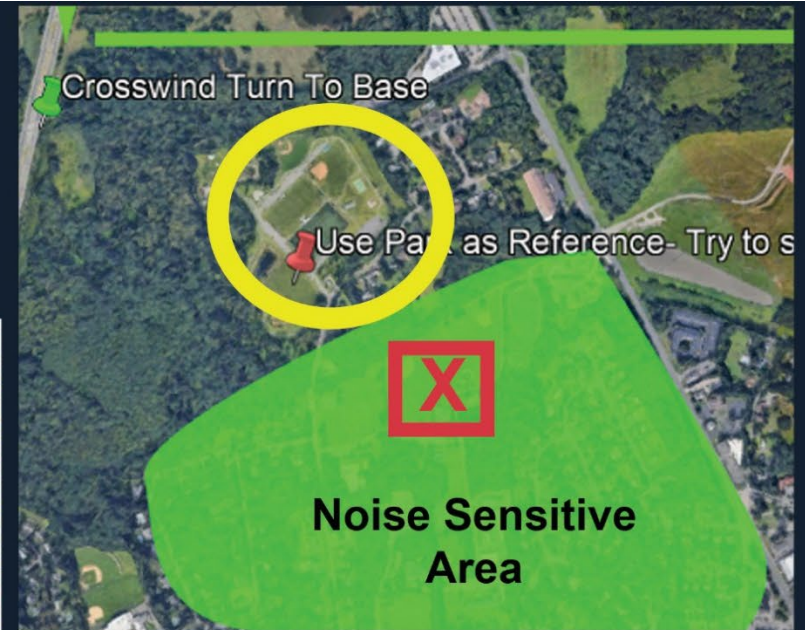
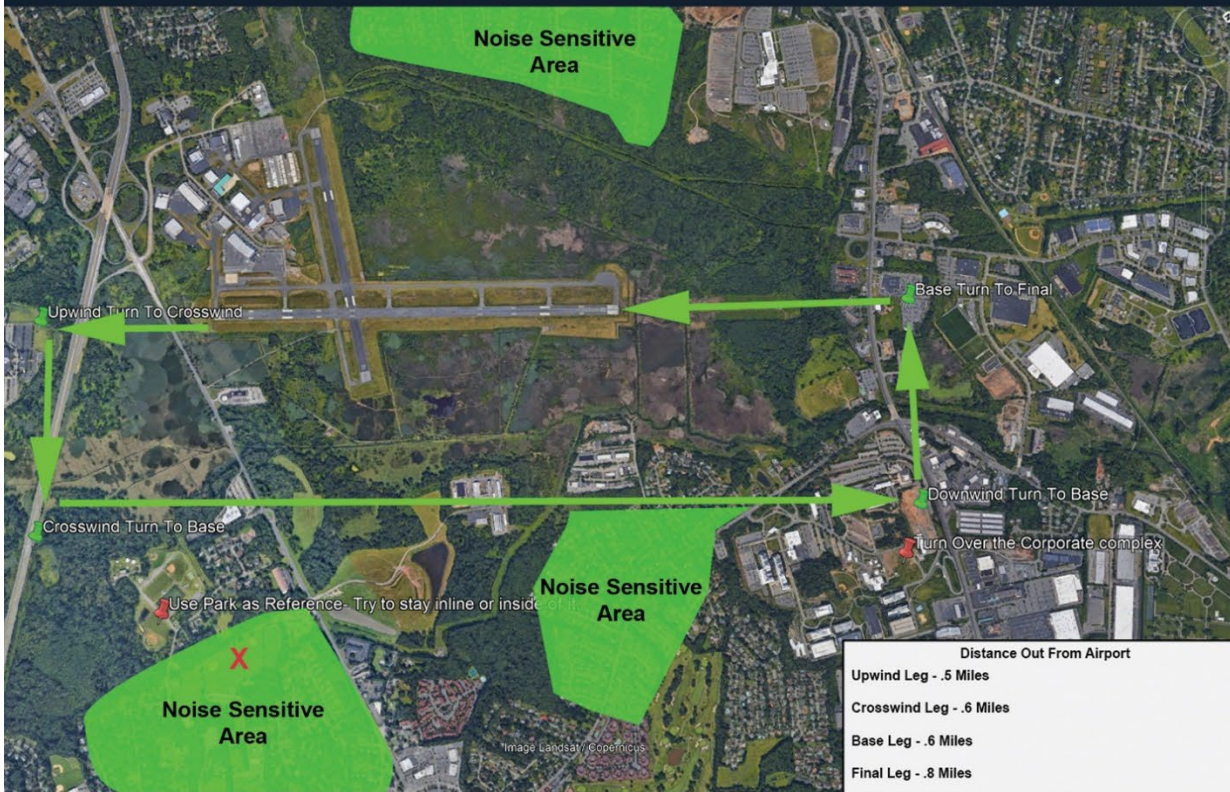
Runway 31 Voluntary Noise Abatement Procedures

Please contact our Airport Operations department with any other questions: 973-538-6400 | Ext. 116

Using Runway 23 for Pattern Work?

Please follow our voluntary noise abatement procedures!

Keep patterns tight to the airfield



Flight Leg Suggestions:

- Keep upwind leg within .5 miles
- Left turn shortly after crossing Route 24
- Keep crosswind leg within .5 miles

When using 23, aim for the baseball fields to be on your RIGHT for your downwind leg (yellow circle above)

Runway 23 Voluntary Noise Abatement Procedures

Please contact our Airport Operations department with any other questions: 973-538-6400 | Ext. 116



MMU
MORRISTOWN AIRPORT

AIRCRAFT WEIGHING 12,500 LBS OR LESS:



Morristown Airport | DM AIRPORTS, LTD.
8 Airport Road
Morristown, N j07960
973-538-6400
www.mmuair.com

LOCATION

Runways:

5/23 5998 x 150 (ASPH-GRVD)
13/31 3998 x 150 (ASPH-GRVD)

RWY 23 Cat 1 ILS
RWY 5 NDB/GPS
RWY 31 PAPI

Traffic Pattern Altitude

1200 ft for aircraft 12500 lbs & less
1700 ft for aircraft great than 12500 lbs

Field Elevation

187 feet

IMPORTANT INFORMATION

Noise Abatement: 973-538-6400 x 112
Airport Operations: 973-538-6400 x 116
Airport Admin. Office: 973-538-6400

Control Tower

Hours 0645L - 2230L
973-267-0331

U.S. CBP

Hours 0800L - 1600L
973-267-0302

ARFF

973-455-1953

Signature Flight Support

973-292-1300

Lynx FBO Network

973-401-1900

WX AWOS

973-290-0135

FREQUENCIES

Ground: 134.2

Tower: 118.1

CTAF: 118.1 (2230L to 0645L)

Clearance: 128.6

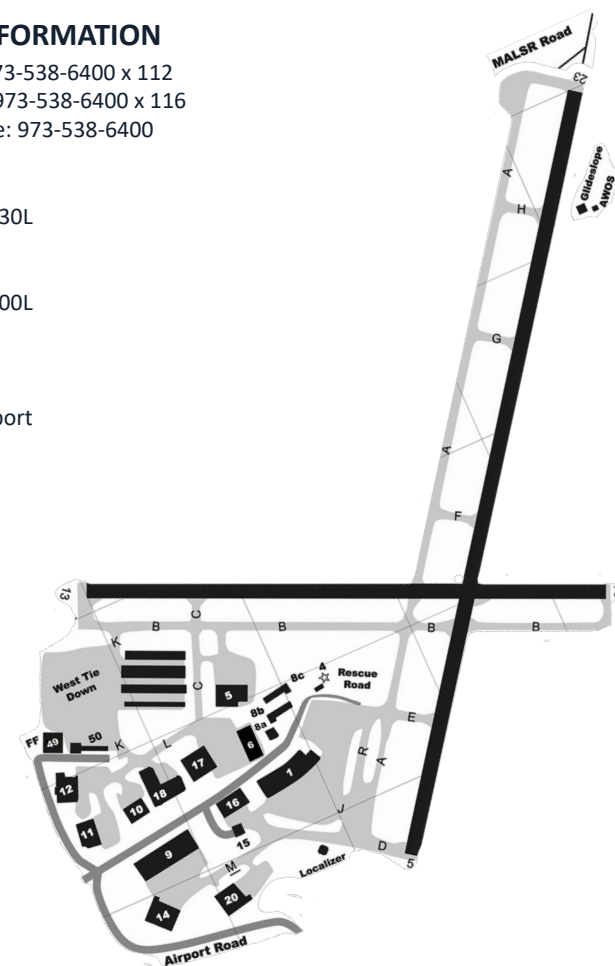
ATIS: 124.25

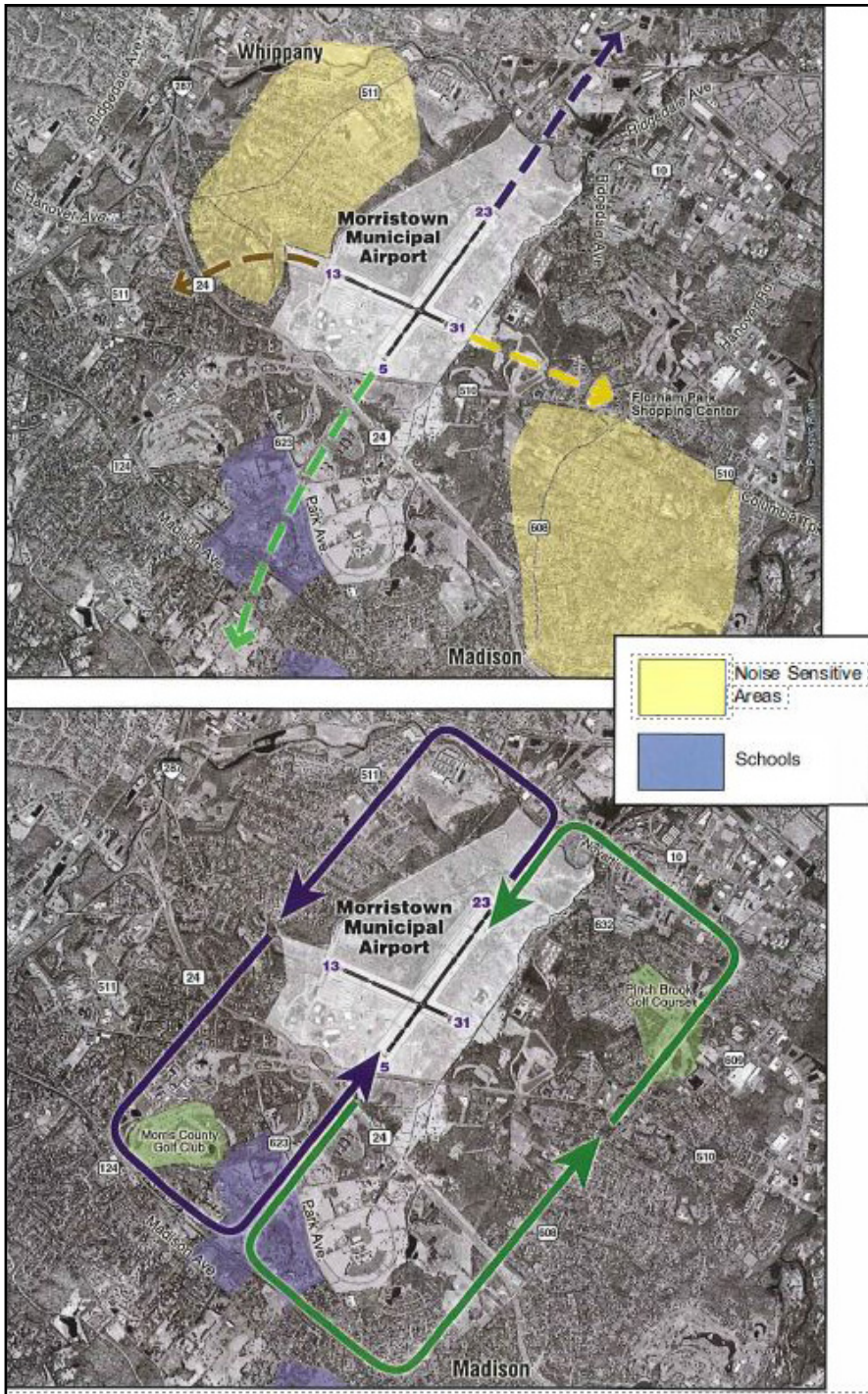
NY APP: 127.6

NY DEP: 119.2

Signature Flight Support: 129.6

Lynx FBO Network: 131.757





Noise Abatement Procedures: Aircraft Weighing 12,500 Pounds or Less

RUNWAY 23

Departure: Climb Rwy heading until reaching 1200 ft. MSL before proceeding on course.

Arrival:* Left traffic pattern

RUNWAY 5

Departure: Use Vy (best rate of climb). Maintain Rwy heading until reaching 1200 ft. MSL before proceeding on course.

Arrival:* Left traffic pattern

RUNWAY 31

Departure: Use Vy (best rate of climb). As soon as feasible, a climbing 10 degree left turn until reaching 1200 ft. MSL before proceeding on course.

Arrival:* Left traffic pattern. Noise sensitive community located off departure end of Rwy 31

* Maintain 1200 ft. MSL or higher as long as practical.

RUNWAY 13

Departure: Use Vy (best rate of climb). Maintain Rwy heading until reaching 1200 ft. MSL before proceeding on course.

Arrival:* 3 mile straight in approach. Rwy 13 should be used only for operational necessity.

Touch & Go Operations (Traffic and ATC workload permitting)

- No Touch & Go Operations on RWY 31 at anytime
- No closed traffic operations on any runway or practice instrument approaches between the hours of 2200L to 0830L.
- No touch and go operations or low approach for military turbojet or turboprop aircraft at any time.

All Runways:

Climb upwind at Vy, using a crab angle to maintain extended centerline of the runway. Climb to 900 ft. MSL (300 feet below TPA) and initiate turn to crosswind leg. Continue climbing to 1200 ft. MSL and complete a standard traffic pattern.

Runway 5:

(Left traffic) Initiate turn to crosswind over Rt 10, overfly Morris County Golf Club prior to initiating a turn to the base leg.

Runway 23:

(Left traffic) Initiate a turn to crosswind over Convent Station between Park Ave. and Madison Ave., overfly Novartis prior to initiating a turn to final.