

An aerial photograph of an airport, showing runways, taxiways, and various airport buildings. The image is slightly faded to serve as a background for the text.

RWY 5-23 Rehabilitation Project

Phase II, Stage B *Overview, Timing & Operational Impacts*

Phase II, Stage B Overview & Timeline

Overall Project Timeline:
July 6, 2021 – Nov. 9, 2021

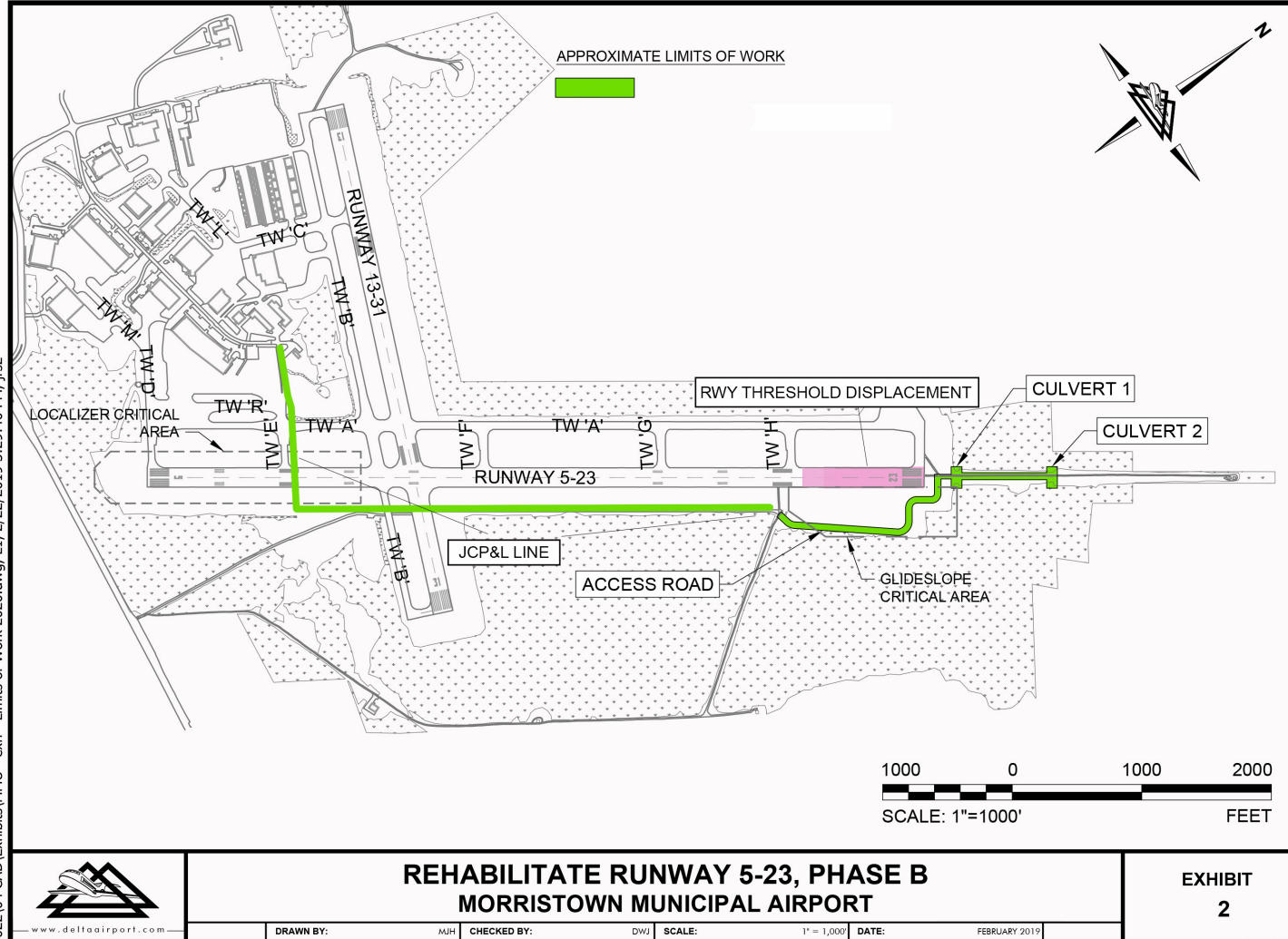
Phase II, Stage B consists of:

- The installation of an access road in the glide slope critical area adjacent to the ILS, connecting to MALSR road for access to culverts
- Installation of stormwater treatment devices between Taxiway Alpha and RWY 5-23
- Installation of conduit to support a new JCP&L line to power ILS and new MALSR System (Phase C)
- Replacement two culverts off the approach end of RWY 23

Project Impacts:

- Disabling ILS Approach system for RWY 23
- Relocation of RWY 23 Threshold
 - *Requires 3-day closure of RWY 5-23*
 - *RWY 5-23 shortened to 5,000'*
 - *Relocation required due to installation of sheet piles/culverts utilizing cranes and ensuring an appropriate safety area for construction personnel*

DRAWING: MMU - exh - Limits of Work 2020.dwg LAYOUT: L1

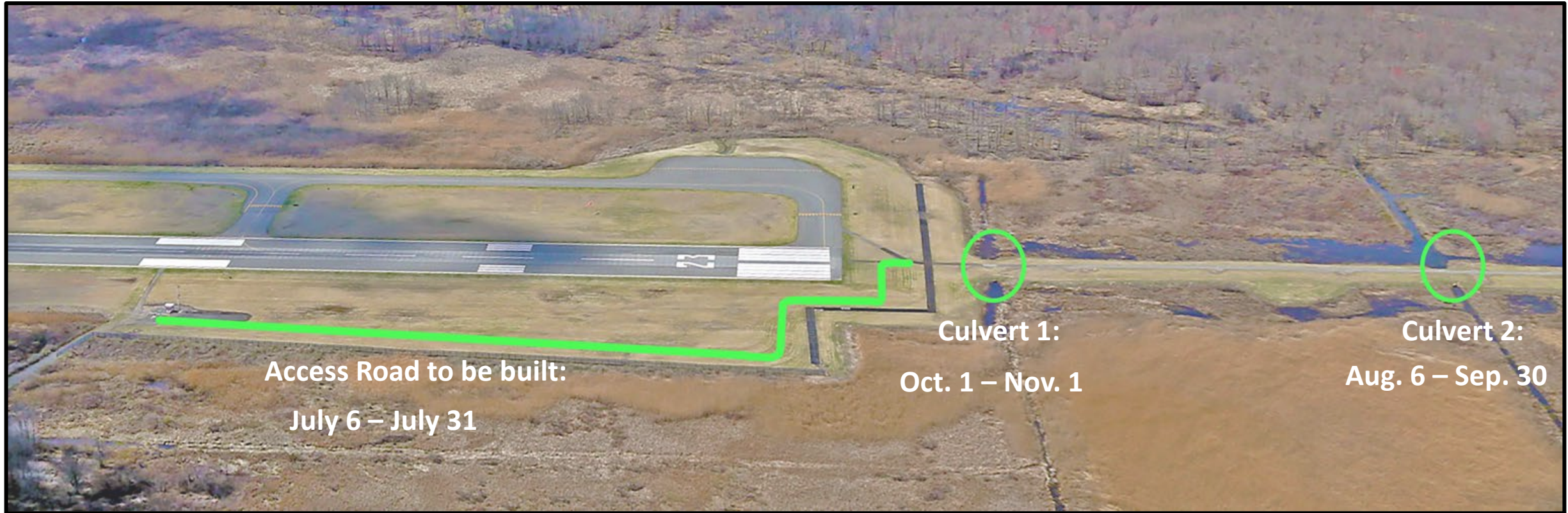


N:\15022\04 CAD\Exhibits\MMU - exh - Limits of Work 2020.dwg, L1, 2/22/2019 3:29:40 PM, jrs2

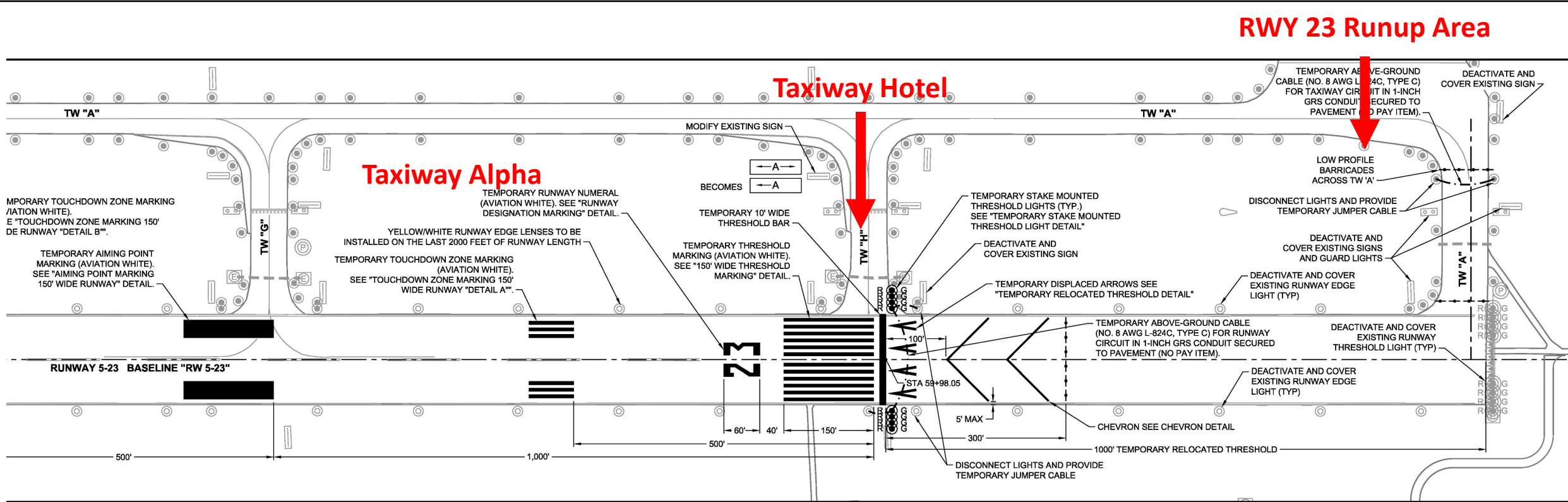
Phase II, Stage B Aerial: JCP&L Line Replacement



Phase II, Stage B Aerial: Access Road and Culverts



RWY 23 Threshold Relocation: 5,097 feet remaining



TEMPORARY RELOCATED THRESHOLD MARKING PLAN

SCALE: 1" = 100'

DISPLACED THRESHOLD NOTES:

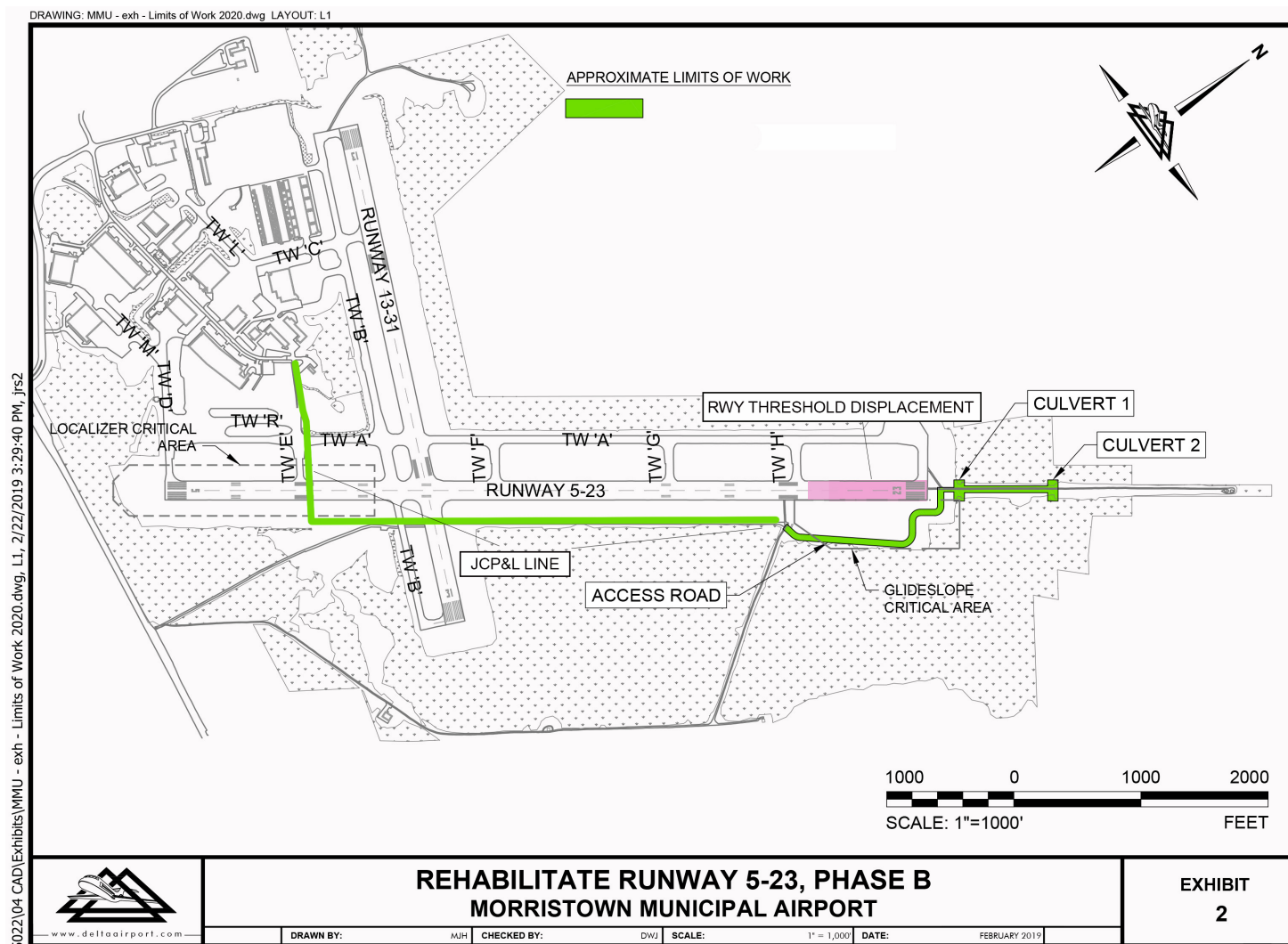
Relocated threshold not available for take off OR roll out on arrival
Threshold in place to create proper safety area for crews working off Runway 23
end

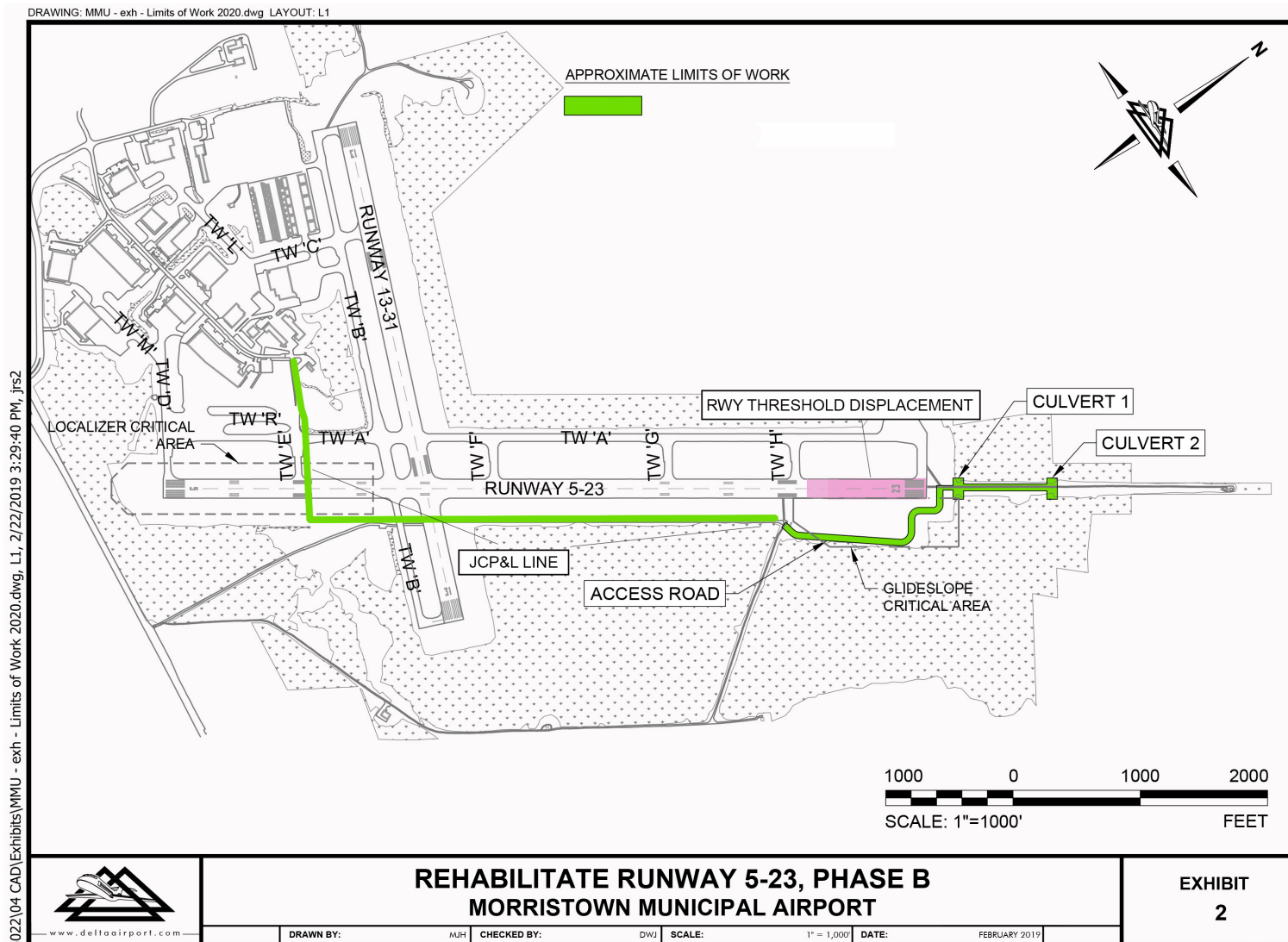
Phase II, Stage B

Expanded Project Timeline: July 6, 2021 – Nov. 9, 2021

- Phase II, Stage B1: July 6 – 31
 - Nightly RWY 23 closures
 - 2200 – 0600
- Phase II, Stage B2: Aug. 6 – Sep. 30
 - RWY 23 threshold relocation: Aug. 6 – 9**
 - 56-hr. full closure Aug. 6 @ 2200 – Aug. 9 @ 0600**
 - Nightly RWY 23 Closures
 - 2200 – 0600
- Phase II, Stage B3: Oct. 1 – Nov. 1
 - RWY 23 relocation returned: Oct. 30 – Nov. 1**
 - 32-hr. full closure Oct. 30 @ 2200 – Nov. 1 @ 0600**
 - Nightly RWY 23 Closures
 - 2200 – 0600
- Closeout: Nov. 1 – Nov. 9

Threshold relocation remains in place through entirety of Stages B2 & B3





Runway 5/23 Full Closures Continued

Full Closures: RWY 5-23 Unavailable

- Aug. 6 at 2200 through Aug. 9 at 0600
 - RWY 23 displaced; 5,097 feet remaining
- Oct. 30 at 2200 through Nov. 1 at 0600
 - RWY 23 threshold relocation removed; full length restored
- *RWY 13-31 available except for a 3-hour window during both closures in the overnight hours for threshold marking painting/removal*

RWY 5-23 Navigational Aid Impacts

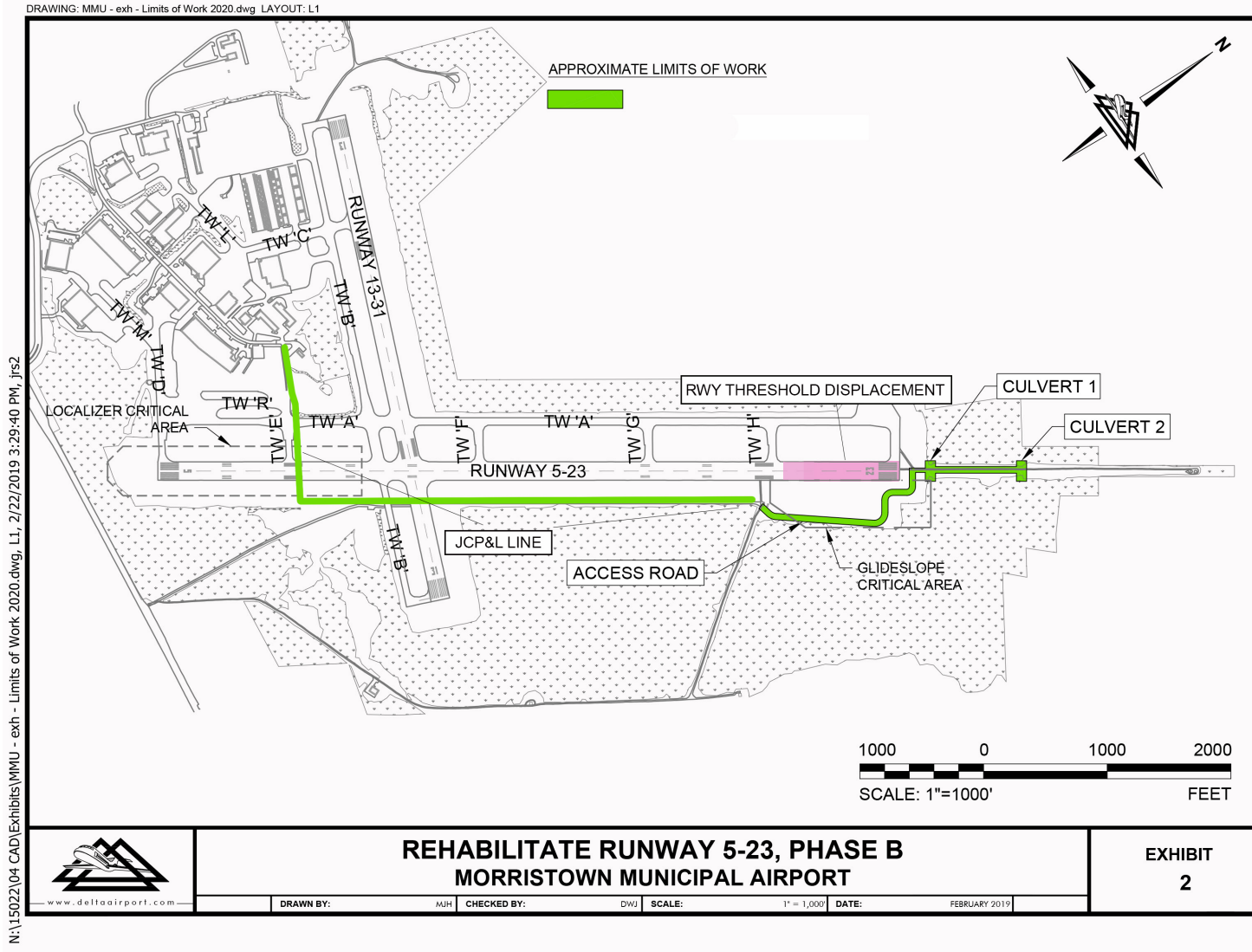
- **July 6 – November 1:**
- *RWY 23 Glideslope Out Of Service for 112 calendar days
- RWY 23 Localizer and MALSR intermittent weeknight closures (2200-0600)
- **August 6 - November 1**
- RWY 23 Localizer and MALSR out of service
- **Glide slope and MALSR must be OOS for culvert work off approach end of RWY 23*

Available Approaches During Phase II, Stage B

RNAV (RNP) Y RWY 23

RNAV (GPS) RWY 05

RNAV (GPS) Z RWY 23



X nightly closures
2200 - 0600

JULY 2021

SUNDAY	MONDAY	TUESDAY	WEDNESDAY	THURSDAY	FRIDAY	SATURDAY
				1	2	3
4	5	6	7	8	9	10
11	12 X	13 X	14 X	15 X	16 X	17
18	19 X	20 X	21 X	22 X	23 X	24
25	26 X	27 X	28 X	29 X	30 X	31

**Nightly Runway Closures Begin for
Access Road Construction**

- 2200 – 0600

*All closure dates subject to change based
upon construction progress & weather*

X nightly closures
2200 - 0600

AUGUST 2021

August 9 = RWY 5-23 SHORTENED TO 5,097 FEET

SUNDAY	MONDAY	TUESDAY	WEDNESDAY	THURSDAY	FRIDAY	SATURDAY
1	2 X	3 X	4	5	6	7 56-Hour
8 Closure	9	10	11	12	13	14
15	16	17	18	19	20	21
22	23	24	25	26	27	28
29	30 X	31 X				

© BlankCalendarPages.com

56-Hour FULL RWY Closure:
2200 on August 6 through 0600 on
August 9

**Starting August at 0600, RWY 23 will
be shortened to 5,097 Feet**

*All closure dates subject to change based
upon construction progress & weather*

X nightly closures
2200 - 0600

SEPTEMBER 2021

SUNDAY	MONDAY	TUESDAY	WEDNESDAY	THURSDAY	FRIDAY	SATURDAY
			1	2	3	4
5	6	7 X	8 X	9 X	10 X	11
12	13 X	14 X	15 X	16 X	17 X	18
19	20 <i>Available for nightly closures due to weather</i>	21	22 X	23 X	24 X	25
26	27 X	28 X	29 X	30 X		

Nightly Closures for Culvert Work

- 2200 - 0600

*All closure dates subject to change based
upon construction progress & weather*

X nightly closures
2200 - 0600

OCTOBER 2021

SUNDAY	MONDAY	TUESDAY	WEDNESDAY	THURSDAY	FRIDAY	SATURDAY
					1	2
3	4 X	5 X	6 X	7 X	8 X	9
10	11 X	12 X	13 <i>Available for nightly closures due to weather</i>	14	15	16
17	18 <i>Available for nightly closures due to weather</i>	19	20 X	21 X	22 X	23
24	25 X	26 X	27 X	28	29	30 32 Hour
31 Closure	1					

© BlankCalendarPages.com

Nightly Closures for Culvert Work

- 2200 – 0600

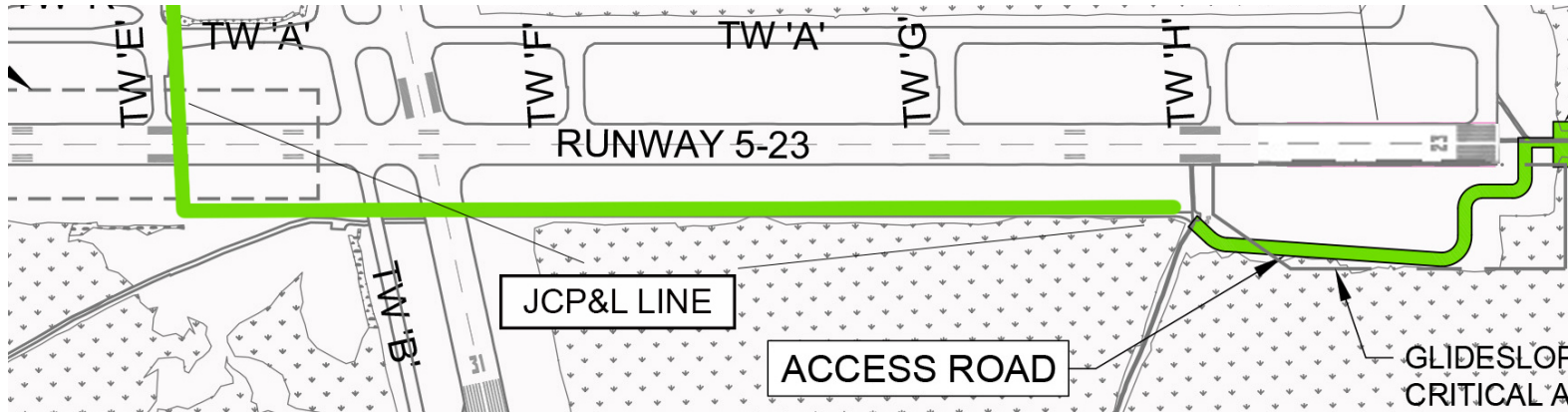
32-Hour FULL RWY Closure:

2200 on October 30 through 0600 on November 1

**RWY 23 returned to full length at
0600 on November 1**

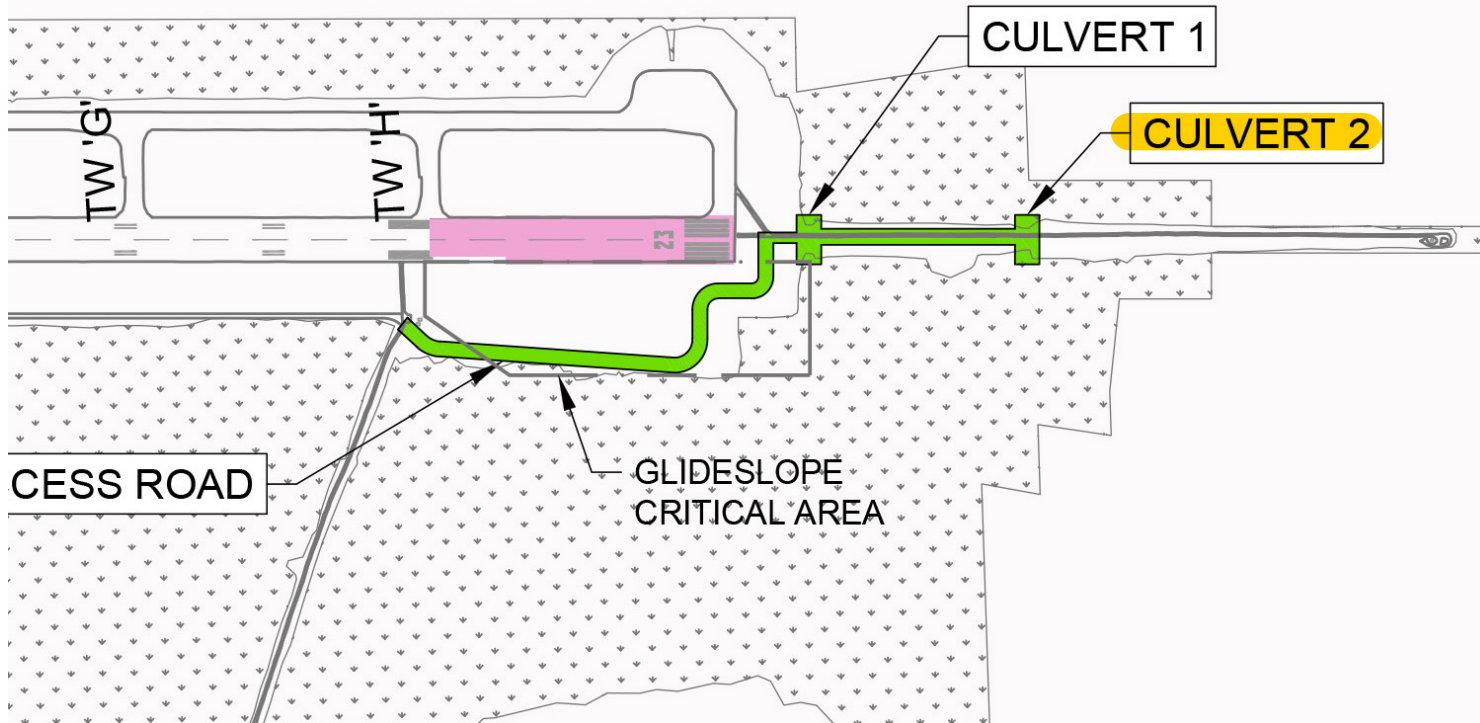
*All closure dates subject to change based
upon construction progress & weather*

Phase II, Stage B1



- **July 6 – July 31**
 - Crews mobilize to site
 - Install soil erosion control measures
 - Completion of access road and required grading on East side of RWY 5-23 from glide slope shack to MALSR road
 - JCP&L power conduit install
 - Nightly closures of Runway 5/23 from 2200 – 0600
 - Slide 9 has date details

Phase II, Stage B2



- **August 6 – September 30**
 - RWY 5-23 threshold relocation
 - *Details on next slide*
 - Replacement of Culvert 2
 - Sheet piling installed off the approach end of RWY 23
 - Runway 5/23 nightly closures from 2200 – 0600
 - Slides 10 & 11 have date details

✈ *RWY 5-23 threshold relocated throughout Stage B2; RWY length shortened to 5,000'*

Runway 5/23 Full Closure 1; Threshold Relocation

August 6 at 2200 through August 9 at 0600

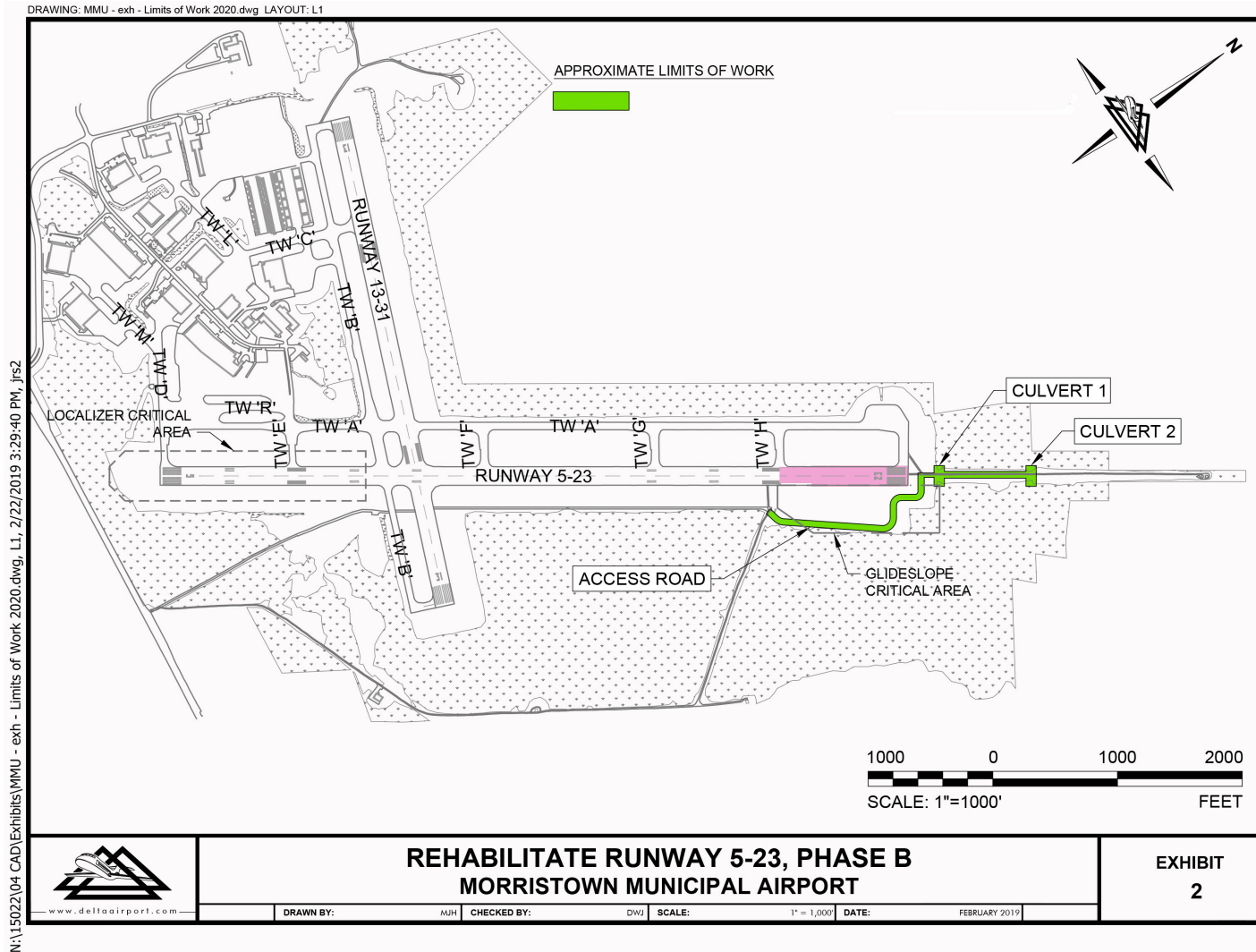
Runway 5/23 will be closed starting at 10pm on August 6 and will remain closed until August 9th at 6:00am.

On August 9th, Runway 5/23 will be re-opened with an approximate 1,000ft displacement.

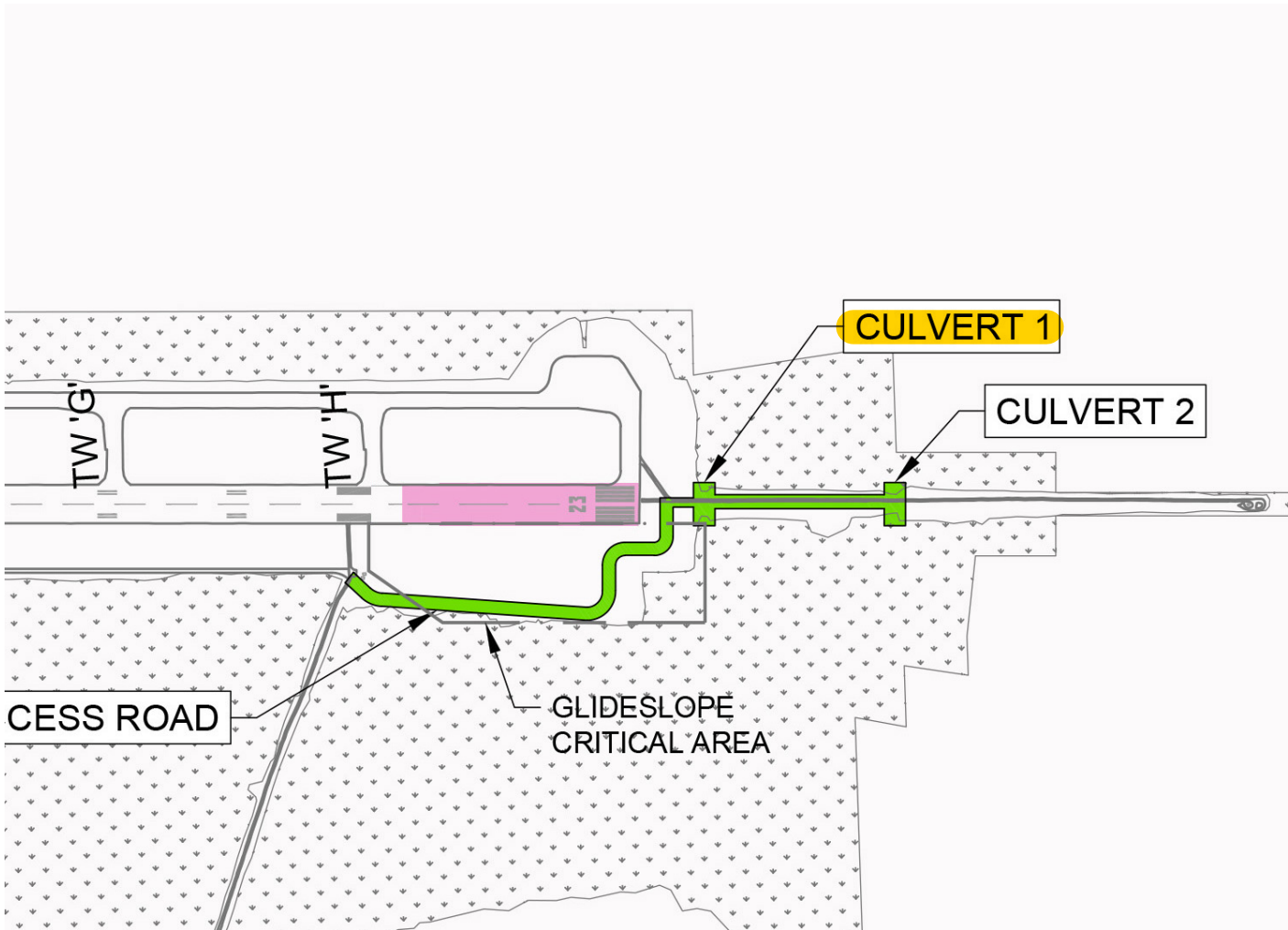
Runway 13-31 will be open **WITH THE EXCEPTION** of a 3-hour closure during the overnight hours to remove touchdown markings in the intersection.

Runway 5/23 will have an available remaining length of 5,097 ft

RWY threshold relocation remains in place through entirety of Stages B2 & B3



Phase II, Stage B3



- **October 1 – November 1**
 - Replacement of Culvert 1
 - Sheet piling installed off the approach end of RWY 23
 - Runway 5/23 nightly closures from 2200 – 0600
 - Slide 12 has date details
- RWY threshold relocation removed
 - *Details on next slide*

RWY 5-23 threshold relocation remains throughout Stage B2; RWY length shortened to 5,0'

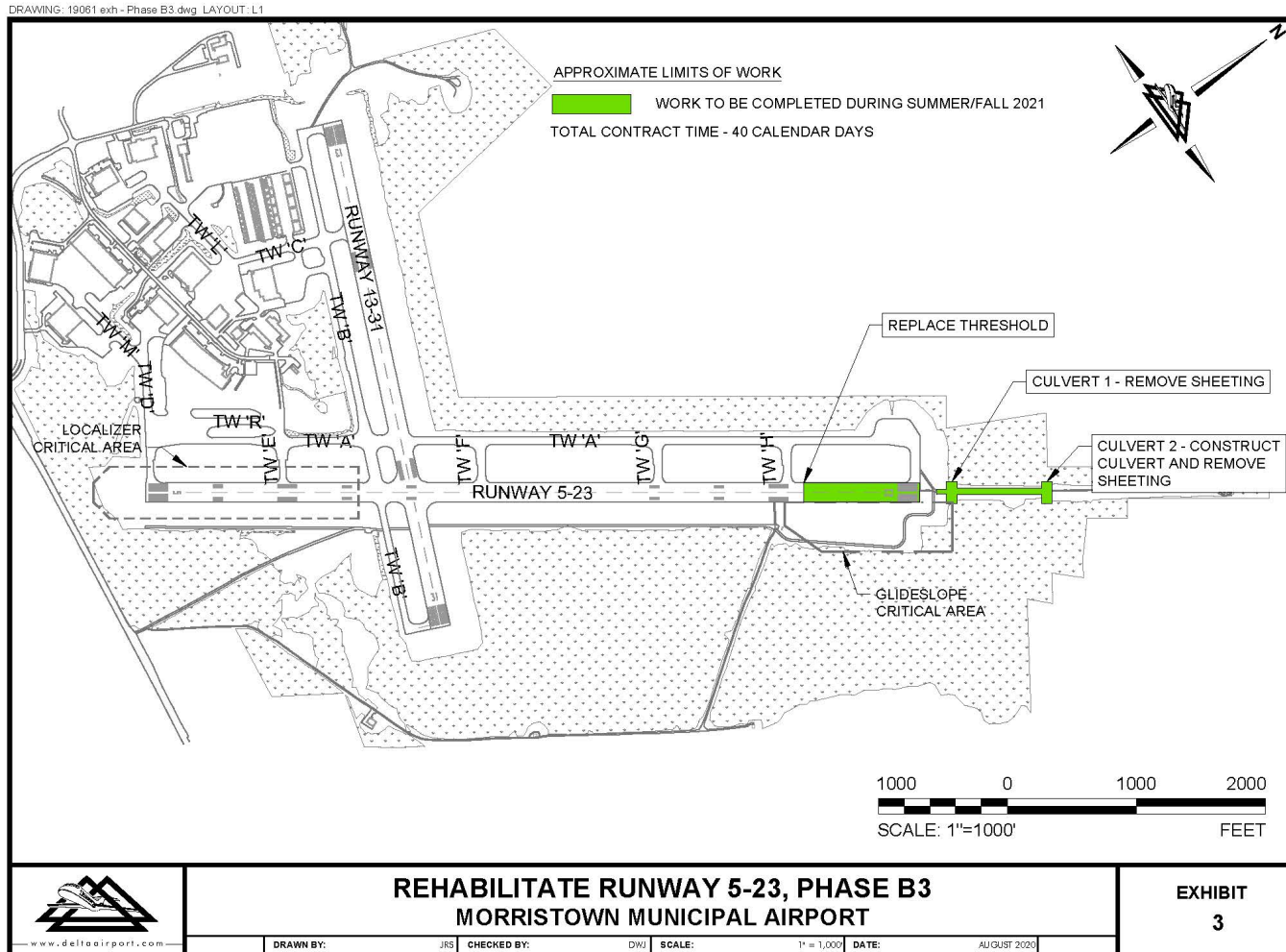
Runway 5/23 Full Closure 2; RWY Threshold Relocation Returned

October 31 at 2200 through November 1 at 0600

Runway 5/23 will be closed starting at 10pm on October 31 and will remain closed until November 1 at 6:00am.

Runway 13-31 will be open **WITH THE EXCEPTION** of a 3-hour closure during the overnight hours to restore touchdown markings in the intersection.

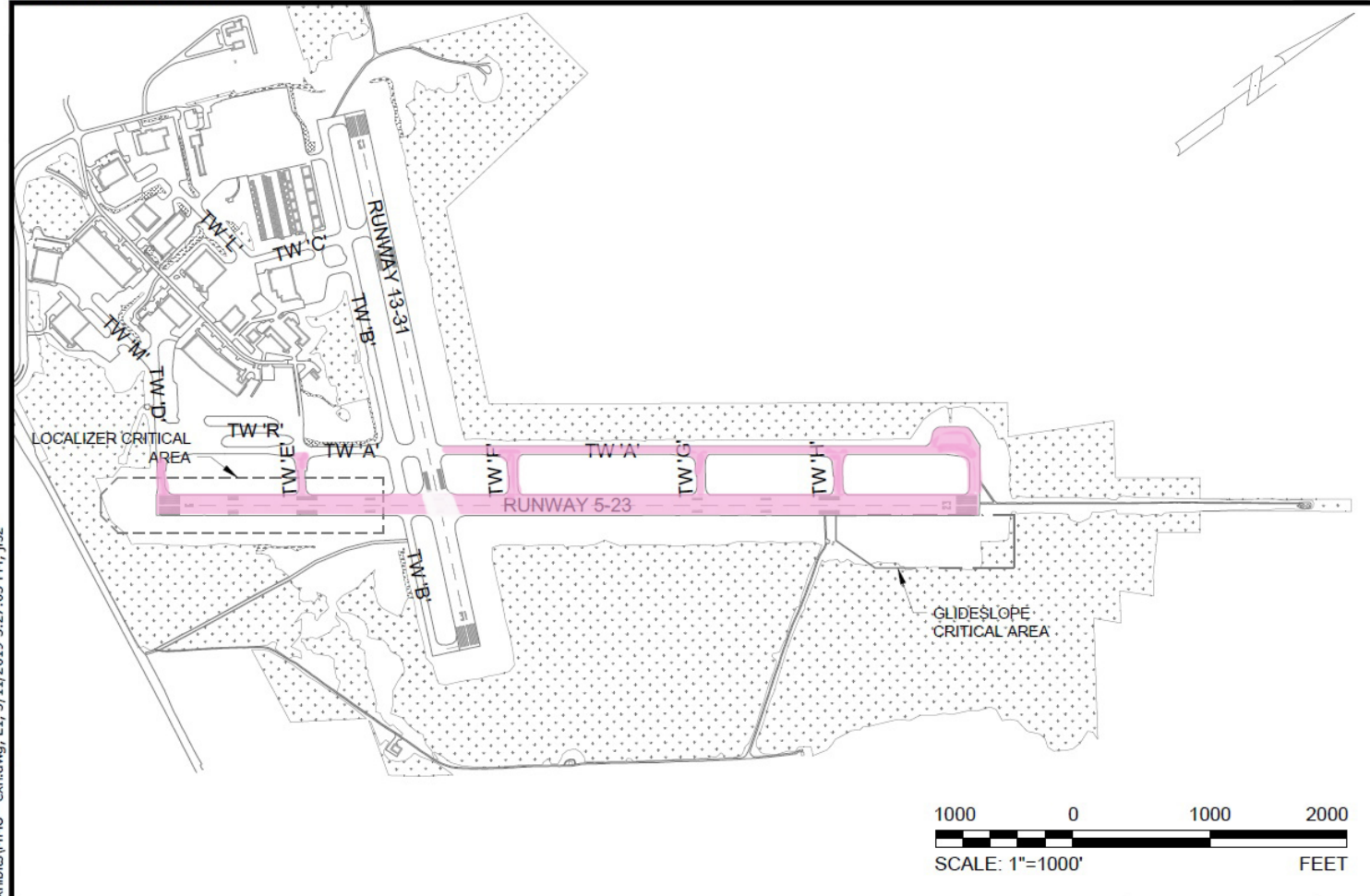
On November 1, Runway 5/23 will be re-opened with its full length; 5,998ft



RWY 5-23 Operational Impacts

- During the Runway 5/23 nightly closures, the following impacts will occur:
 - **Taxiway Delta:** Closed from RWY Alpha to RWY 5
 - **Taxiway Alpha:** Closed from RWY 13-31 to RWY 23
 - **Taxiways Echo, Foxtrot, Golf & Hotel:** Closed from Taxiway Alpha to RWY 5-23
- RWY 13-31 will remain open during night-closures of RWY 5-23 except for the 3-hour closures during the two weekend full closures of Runway 5/23 for threshold relocation work

DRAWING: MMU - exh.dwg LAYOUT: L1



1000 0 1000 2000
SCALE: 1"=1000' FEET



REHABILITATE RUNWAY 5-23, AIRFIELD IMPACTS
MORRISTOWN MUNICIPAL AIRPORT



DRAWN BY:

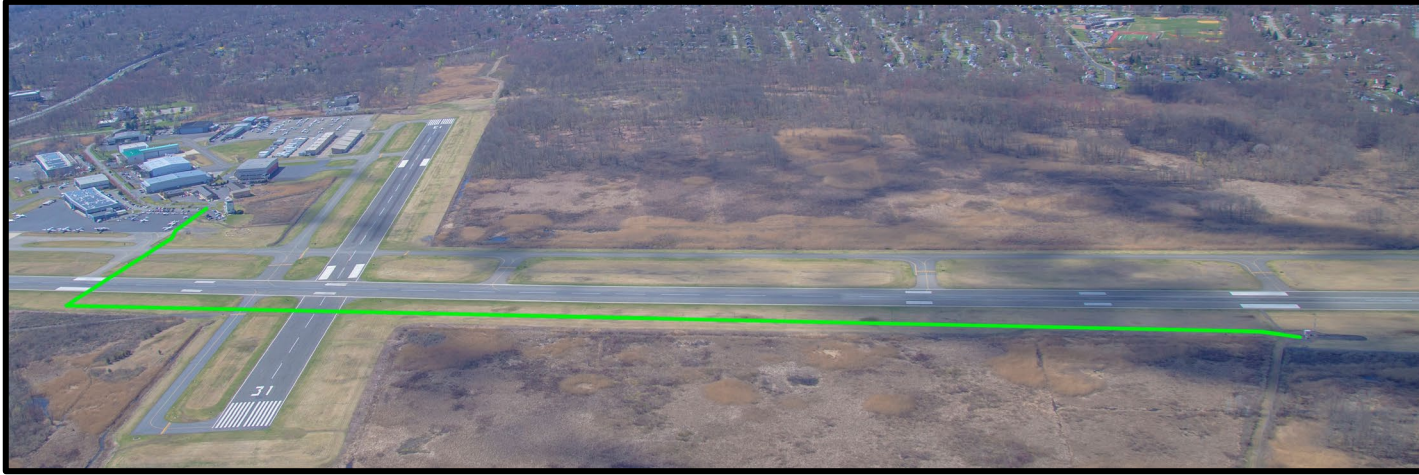
CHECKED BY:

SCALE:

1" = 1,000'

DATE:

Questions & Comments



DM AIRPORTS, LTD. Contacts:

Darren Large

Director, Operations and Facilities

darrenl@mmuair.com

Corey Hanlon

Manager, Communications & Gov't Relations

coreyh@mmuair.com



This presentation is available at

www.mmuair.com