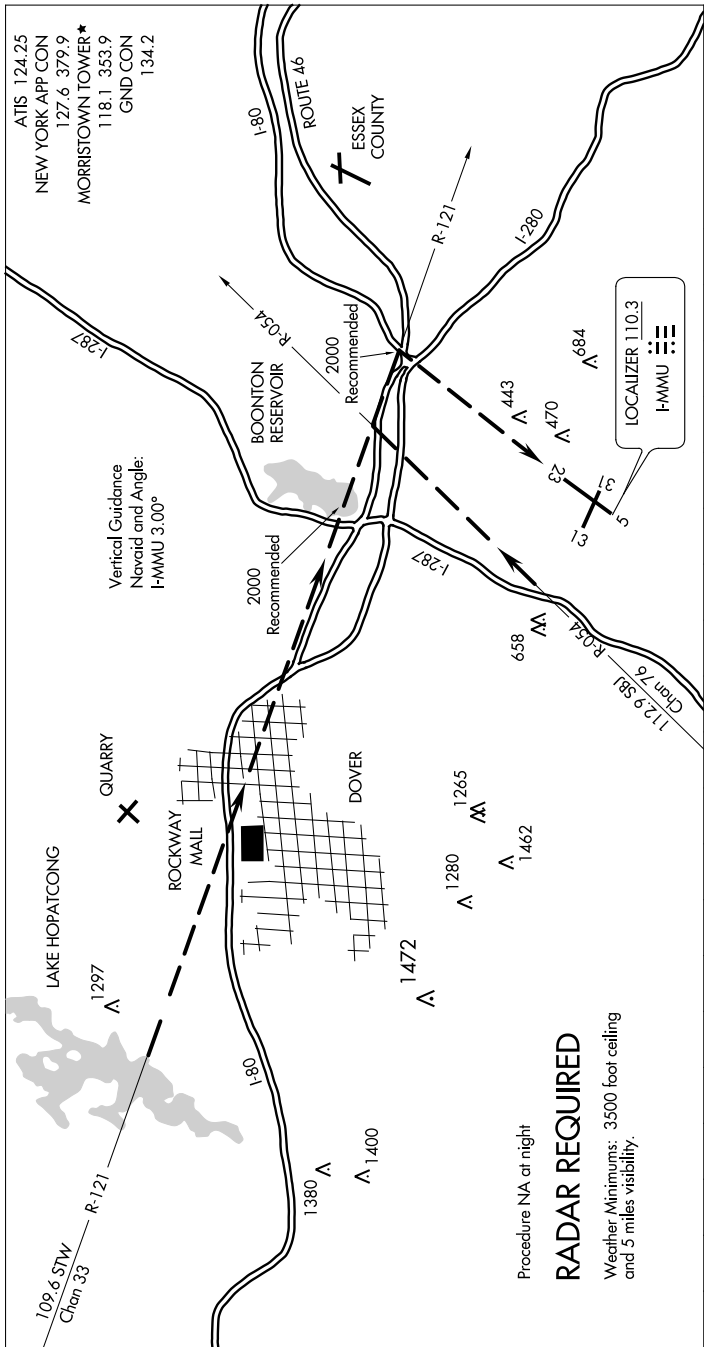


ROUTE 80 VISUAL RWY 23

AL-931 (FAA)

MORRISTOWN MUNI (MMU)
MORRISTOWN, NEW JERSEY

NE-2, 13 SEP 2018 to 11 OCT 2018



ATIS 124.25
 NEW YORK APP CON
 127.6 379.9
 MORRISTOWN TOWER*
 118.1 353.9
 GND CON
 134.2

Vertical Guidance
 Navaid and Angle:
 I-MMU 3.00°

Procedure NA at night

RADAR REQUIRED

Weather Minimums: 3500 foot ceiling
 and 5 miles visibility.

1 NM	2	3	4	5	6	7	8	9	10	11	12	13	14	15	16	17	18	19	20	21	22	23
------	---	---	---	---	---	---	---	---	----	----	----	----	----	----	----	----	----	----	----	----	----	----

When approaching the airport from the northwest, expect vectors to intercept the STW R-121.
 When you see the highway junction of Rts. 46, 80, and 280, proceed to that point to turn final for Rwy 23.

When approaching the airport from the southwest, expect vectors to intercept the SBJ R-054.
 When you see Rt. 287, follow it until turning base over Rt. 80. Turn final over the junction of Rts. 46, 80 and 280 for Rwy 23.

ROUTE 80 VISUAL RWY 23

40°48'N-74°25'W

MORRISTOWN, NEW JERSEY
MORRISTOWN MUNI (MMU)

NE-2, 13 SEP 2018 to 11 OCT 2018