

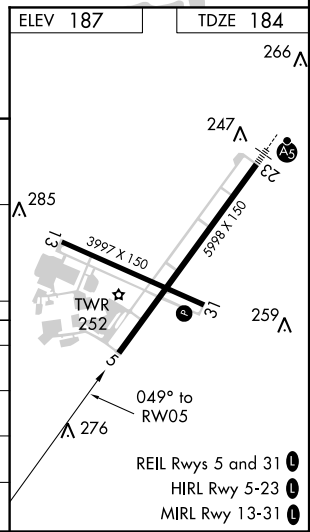
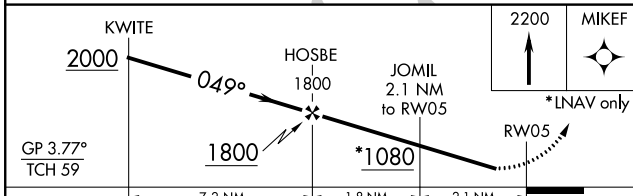
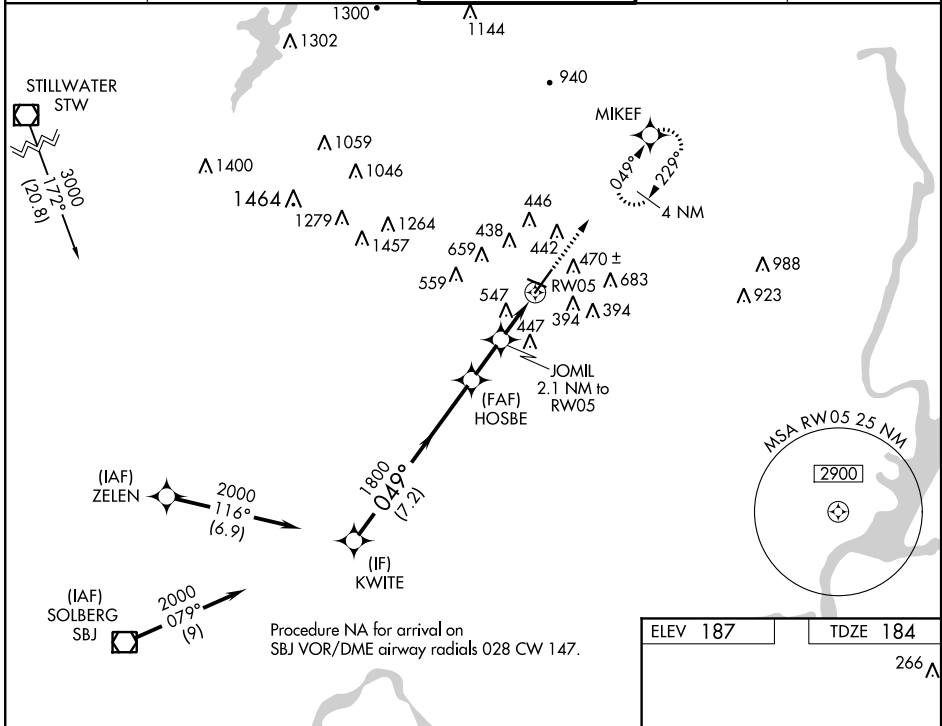
WAAS CH <b>97720</b> <b>W05A</b>	APP CRS <b>049°</b>	Rwy Idg TDZE <b>184</b> Apt Elev <b>187</b>	<b>5998</b>
--	------------------------	---	-------------

# RNAV (GPS) RWY 5

MORRISTOWN MUNI (MMU)

RNP APCH.		MORRISTOWN TOWER* <b>118.1</b> (CTAF) <b>353.9</b>		GND CON <b>134.2</b>	CLNC DEL <b>128.6</b>
<p><b>▽</b> Rwy 5 helicopter visibility reduction below 1 SM NA. Procedure NA at night. For uncompensated Baro-VNAV systems, LNAV/VNAV NA below -15°C or above 33°C.</p>		<p>MISSED APPROACH: Climb to 2200 direct MIKEF and hold.</p>			

ATIS <b>124.25</b>	NEW YORK APP CON <b>127.6 379.9</b>	MORRISTOWN TOWER* <b>118.1</b> (CTAF) <b>353.9</b>	GND CON <b>134.2</b>	CLNC DEL <b>128.6</b>
-----------------------	--	---	-------------------------	--------------------------



CATEGORY	A	B	C	D
LPV DA	861-1 $\frac{7}{8}$	677 (700-1 $\frac{7}{8}$ )		NA
LNAV/VNAV DA	893-2	709 (800-2)		NA
LNAV MDA	800-1	616 (700-1)	800-1 $\frac{3}{4}$ 616 (700-1 $\frac{3}{4}$ )	NA
<b>C</b> CIRCLING	860-1 673 (700-1)	900-1 713 (800-1)	1000-2 $\frac{1}{2}$ 813 (900-2 $\frac{1}{2}$ )	NA

NE-2, 13 SEP 2018 to 11 OCT 2018

NE-2, 13 SEP 2018 to 11 OCT 2018