


LOC I-MMU	APP CRS	Rwy Idg	5998
110.3	229°	TDZE	183
		Apt Elev	187

ILS or LOC RWY 23

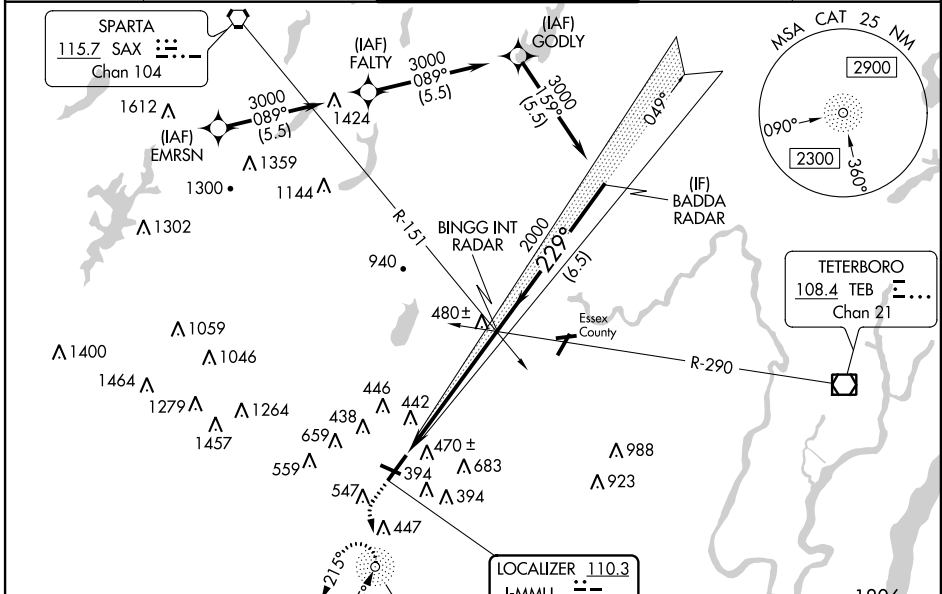
MORRISTOWN MUNI (MMU)

When local altimeter setting not received, use Newark Liberty Intl altimeter setting and increase all DA 54 feet and all MDA 60 feet; increase S-LOC 23 Cat C and D visibility 1/2 mile. Autopilot coupled approach NA below 732. ADF required. Rwy 23 helicopter visibility reduction below 1 SM NA. Rwy 13, 31 helicopter visibility reduction below 1 SM NA. Circling Rwy 13, 31 NA at night. For inop ALS, increase S-LOC 23 Cat A/B visibility to 1 SM. For inop ALS when using Newark Liberty Intl altimeter setting, increase S-ILS 23 all Cats visibility to 1 1/2 SM, and S-LOC 23 Cat A/B to 1 SM, and Cat C/D to 1 3/4 SM.

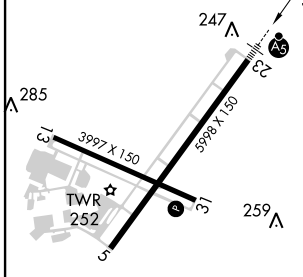
MALSR


MISSED APPROACH:
 Climb to 700 then climbing left turn to 2000 direct CAT NDB and hold, continue climb-in-hold to 2000.

ATIS	NEW YORK APP CON	MORRISTOWN TOWER ★	GND CON	CLNC DEL
124.25	127.6 379.9	118.10 (CTAF) 353.9	134.2	128.6



ELEV 187	TDZE 183
229° 5.5 NM from FAF	266 A
247 A	259 A



GPS or RADAR REQUIRED

700 2000 CAT

BINGG INT RADAR BADA RADAR

2000 229° 3000

GS 3.00° TCH 55

CATEGORY	A	B	C	D
S-ILS 23	488-1 305 (400-1)			
S-LOC 23	740-1	557 (600-1)	740-1 1/2	557 (600-1 1/2)
CIRCLING	860-1 673 (700-1)	900-1 713 (800-1)	1000-2 1/2 813 (900-2 1/2)	1200-3 1013 (1100-3)

MORRISTOWN, NEW JERSEY
 Amdt 11A 07DEC17

40°48'N-74°25'W

MORRISTOWN MUNI (MMU)

ILS or LOC RWY 23

NE-2, 13 SEP 2018 to 11 OCT 2018

NE-2, 13 SEP 2018 to 11 OCT 2018